

# **DELHI TRANSCO LTD.**

STATE LOAD DISPATCH CENTER

## **PROGRESS REPORT**

\*\*\*\*\*

SEPTEMBER 2014

<b>S. No.</b>	<b>CONTENTS</b>	<b>Page No.</b>
<b>1.</b>	<b>Salient Features of Delhi Power System</b>	<b>3</b>
<b>2.</b>	<b>Performance of Generating Stations within Delhi</b>	<b>4</b>
<b>3.</b>	<b>Details of Outage of Generating Stations within Delhi</b>	<b>5-16</b>
<b>4.</b>	<b>Allocation of Power to Delhi from unallocated quota of central sector</b>	<b>17-20</b>
<b>5.</b>	<b>Allocation of Power to Discoms</b>	<b>21</b>
<b>6.</b>	<b>Power Availability Demand Position of Delhi at the time of occurrence of Peak Demand</b>	<b>22</b>
<b>7.</b>	<b>Power Availability Demand Position of Delhi at the time of occurrence of Maximum Un-Restricted Demand</b>	<b>23</b>
<b>8.</b>	<b>Source wise scheduled drawl from grid and Availability within Delhi</b>	<b>24-26</b>
<b>9.</b>	<b>Shedding Details</b>	<b>27-30</b>
<b>10.</b>	<b>Load Curve for the Day of Peak Demand</b>	<b>31</b>
<b>11.</b>	<b>Load Curve for the day of occurrence of Maximum Un-Restricted Demand</b>	<b>32</b>
<b>12.</b>	<b>Load Curve for the day of Maximum Energy Consumed</b>	<b>33</b>
<b>13.</b>	<b>Load Curve for the day of Maximum Un-Restricted Energy Demand</b>	<b>34</b>
<b>14.</b>	<b>Load Duration Curve</b>	<b>35</b>
<b>15.</b>	<b>Frequency Analysis</b>	<b>36</b>
<b>16.</b>	<b>Voltage Profile for significant 220kV Sub-Stations</b>	<b>37</b>
<b>17.</b>	<b>Voltage Profile for significant 400kV Sub-Stations</b>	<b>38-39</b>
<b>18.</b>	<b>Details of Capacitors Installations in Delhi</b>	<b>40-45</b>
<b>19.</b>	<b>Tripping Details of 400/220 KV System in Delhi Power System</b>	<b>46-49</b>
<b>20.</b>	<b>Details of Under frequency Relay operations in Delhi Power System</b>	<b>50</b>

**SALIENT FEATURES OF DELHI POWER SYSTEM**

<b>Sr. No.</b>	<b>Features</b>	<b>SEPTEMBER 2013</b>	<b>SEPTEMBER 2014</b>
<b>1</b>	<b>Effective Generation Capacity within Delhi in MW</b>		
	Rajghat Power House	135	135
	Gas Turbine	270	270
	Pragati Power Corporation Ltd.	330	330
	Badapur Thermal Power Station	705	705
	Rithala GT	108	108
	Bawana	685	1372
	TOWMCL	16	16
	Total	2249	2936
<b>2</b>	<b>Maximum Unrestricted Demand (MW)</b>	<b>4803</b>	<b>4882</b>
	Date	11.09.13	18.09.2014
	Time	22.59.59	22.53.58
<b>3</b>	<b>Peak Demand met (MW)</b>	<b>4803</b>	<b>4882</b>
	Date	11.09.13	18.09.2014
	Time	22.59.59	22.53.58
4	Peak Availability (MW)	4585	4721
5	Shortage (-) / Surplus (+) in MW	(-)218	(-) 161
6	Percentage Shortage (-) / Surplus (+)	(-) 4.54	(-) 3.3
7	Maximum Energy Consume in a day (Mus)	95.984	102.341
8	Energy Consumed during the month	<b>2624.579</b>	<b>2818.883</b>
<b>9</b>	<b>Load Shedding in Mus</b>		
A)	Due to Grid Restrictions		
i)	Under Frequency Relay Operations	0.035	0.000
ii)	Manual Load shedding from DTL S/Stns.	0.000	0.000
iii)	Load Shedding due to low frequency / Low Voltage / TTC/ATC Violation		
	NDPL	0.465	0.328
	BRPL	0.317	3.584
	BYPL	0.249	1.214
	NDMC	0.000	0.000
	MES	0.000	0.000
iv)	Due to transmission Constraints in Central Sector	0.657	0.000
	<b>Total due to Grid Restriction</b>	<b>1.723</b>	<b>5.126</b>
B)	Due to Constraints in System in Mus		
	DTL	1.069	0.627
	NDPL	0.169	0.588
	BRPL	0.649	0.930
	BYPL	0.317	0.222
	NDMC	0.000	0.000
	MES	0.000	0.000
	Other Agencies	0.055	0.011
	<b>Total</b>	<b>2.259</b>	<b>2.378</b>
<b>11</b>	<b>Grand Total in Mus</b>	<b>3.982</b>	<b>7.504</b>

2. PERFORMANCE OF GENERATING STATIONS WITHIN DELHI DURING SEPTEMBER 2014

A) For the month of September 2014

All Figures in MUs

S. No	Stations	Gross Generation	Aux. Consumption	Net Generation	Availability (%)	Backing Down
1.	RPH	53.273	8.595	44.678	51.94	0.000
2.	GT	81.018	2.748	78.270	69.25	52.993
3.	PPCL	207.342	5.261	202.081	93.15	13.109
4.	BTPS	234.113	23.588	210.525	54.45	28.515
5.	Rithala	0.000	0.059	-0.059	89.17	59.040
6.	Bawana	210.497	8.461	202.036	--	705.701
7.	Towmcl	10.733	1.734	8.999	--	--
	<b>TOTAL</b>	<b>796.976</b>	<b>50.446</b>	<b>746.53</b>	<b>--</b>	<b>--</b>

B) For the Year 2013-14 (Upto September 2014)

Power Station	Effective Capacity (MW)	Net Generation in MUs for Sept 2014	Availability (%) for Sept 2014	PLF (%) for Sept 2014	Cumulative Generation in MUs upto Sept 2014 for the year 2014-15	Cumulative Availability in % upto Sept 2014 for the year 2014-15	Cumulative PLF in % upto Sept 2014 for the year 2014-15
RPH	135	44.678	0.000	51.94	291.391	65.82	55.13
GT	270	78.270	52.993	41.15	513.516	61.21	44.69
PPCL	330	202.081	13.109	87.46	945.387	70.04	67.18
BTPS	705	210.525	28.515	46.82	1787.009	79.16	63.66
Rithala	108	-0.059	59.040	0.00	-0.355	89.17	0.00
Bawana	1372	202.036	705.701	--	842.058	--	--
Towmcl	16	8.999	--	--	60.552	--	--
<b>TOTAL</b>	<b>2936</b>	<b>746.53</b>	<b>--</b>	<b>--</b>	<b>4439.558</b>	<b>--</b>	<b>--</b>

## 1. RPH

Unit No	Capacity in MW	Outage		Synchronization		Reason of Outage
		Date	Time	Date	Time	
1	67.5	04.11.13	12.00	16.04.14	10.50	Stopped due to low demand and high frequency
		04.05.14	10.35	07.05.14	03.10	Boiler tube leakage
		07.05.14	15.35	07.05.14	16.20	Loss of fuel
		07.05.14	16.40	07.05.14	19.25	Loss of fuel
		10.05.14	22.30	10.05.14	23.20	Flame failure
		13.05.14	10.45	14.05.14	15.10	Stopped due to low demand and high frequency
		14.05.14	15.40	14.05.14	16.25	Drum level low
		14.05.14	17.30	14.05.14	17.55	Excitation failure
		22.05.14	09.20	22.05.14	10.45	Turbine trip
		22.05.14	22.25	23.05.14	00.50	Flame failure
		23.05.14	22.30	24.05.14	00.00	Turbine trip
		24.05.14	00.50	24.05.14	01.20	Furnance pressure very high
		30.05.14	16.55	31.05.14	00.00	Unit tripped due to grid disturbance
		31.05.14	00.15	31.05.14	02.30	Drum level low
		09.06.14	13.15	09.06.14	19.25	Unit tripped due to 220kV supply fail
		21.06.14	18.00	21.06.14	20.05	Unit tripped due to 220kV supply fail
		23.06.14	01.40	23.06.14	04.05	Unit tripped due to 220kV supply fail
		25.06.14	05.00	25.06.14	09.25	Unit tripped due to 220kV supply fail
		02.07.14	14.05	02.07.14	16.10	Unit tripped due to 220kV supply failure
		03.07.14	12.05	05.07.14	17.15	Boiler tube leakage
		18.07.14	03.20	18.07.14	06.20	Tripped due to turbine trip
		12.08.14	01.20	16.08.14	20.30	Stopped due to low demand and high frequency
		17.08.14	11.30	19.08.14	23.00	Stopped to attend boiler tube leakage
		22.08.14	10.05	22.08.14	12.20	Unit tirpped dued to flame failure
		23.08.14	12.20	23.08.14	22.20	Desynchronised due to heavy water leakage from spary line.
		16.09.14	04.45	16.09.14	17.25	Unit tripped due to furnance pr high
		20.09.14	03.10	20.09.14	04.10	
		20.09.14	22.45	22.09.14	23.05	Boiler tube leakage
		26.09.14	10.15	30.09.14	23.59	Tripped due to flame failure

Unit No	Capacity in MW	Outage		Synchronization		Reason of Outage
		Date	Time	Date	Time	
2	67.5	15.03.14	18.00	16.04.14	04.40	Stopped due to low demand and high frequency
		27.04.14	19.30	05.05.14	01.25	Desynchronized on ETD due to fire hazard at boiler corder no. 4
		14.05.14	18.45	17.05.14	17.50	Stopped due to low demand and high frequency
		30.05.14	16.55	30.05.14	23.30	Unit tripped due to grid disturbance
		04.06.14	00.20	05.06.14	00.45	Boiler tube leakage
		07.06.14	11.00	07.06.14	12.05	Turbine trip
		09.06.14	13.15	09.06.14	15.50	Unit tripped due to 220kV supply fail
		21.06.14	18.00	21.06.14	22.50	
		23.06.14	01.40	23.06.14	08.30	
		25.06.14	05.05	25.06.14	07.50	
		02.07.14	14.05	02.07.14	15.50	
		05.07.14	10.10	06.07.14	00.25	Tripped due to condenser vaccum low
		06.07.14	12.15	13.07.14	00.10	Boiler tube leakage
		16.07.14	10.30	16.07.14	11.05	Unit tripped due to UAT oil level low
		18.07.14	08.00	21.07.14	11.10	Boiler tube leakage
		06.08.14	18.10	08.08.14	24.00	Boiler tube leakage
		09.08.14	00.00	12.08.14	23.40	Stopped due to low demand and high frequency
		22.08.14	18.00	30.08.14	00.50	Boiler tube leakage
		10.09.14	04.45	10.09.14	05.45	Unit tripped due to furnance pr high
		11.09.14	20.10	16.09.14	20.40	Boiler tube leakage
		25.09.14	12.45	25.09.14	14.10	Unit tripped due to DC control supply failure
		27.09.14	00.45	27.09.14	01.25	Tripped due to turbine trip
		27.09.14	06.40	27.09.14	07.15	Unit tripped due to condansor vaccume low
28.09.14	01.00	28.09.14	04.35	Unit tripped due to drum level high		
28.09.14	13.40	28.09.14	14.55	Unit tripped due to 220kv supply failure		

## (B) Gas Turbine

Unit No	Capacity in MW	Outage		Synchronization		Reason of Outage
		Date	Time	Date	Time	
1	30	27.03.14	13.10	15.04.14	18.28	Stopped due to low demand and high frequency
		15.04.14	18.38	15.04.14	19.45	Machine tripped due to grid disturbance
		14.06.14	02.02	16.04.14	08.01	Stopped due to low demand and high frequency
		16.04.14	18.15	23.04.14	19.45	
		04.05.14	10.05	04.05.14	13.45	Stopped due to LTTH High
		25.05.14	03.31	26.05.14	18.02	Stopped due to low demand and high frequency
		27.05.14	12.16	28.05.14	20.11	
		30.05.14	16.55	30.05.14	17.30	Machine came on FSNL due to grid disturbance.
		02.06.14	03.27	02.06.14	05.55	Due to tripping of 20 MVA Tr. Machine tripped
		03.06.14	19.02	03.06.14	20.21	Due to tripping of 6.6 KV Bus Coupler machine came on FSNL
		09.06.14	13.12	09.06.14	13.42	Machine came on FSNL as the 220 KV Bus became dead at IP Ext end.
		13.06.14	23.10	14.06.14	01.45	Tripped on loss of excitation
		14.06.14	01.45	16.06.14	12.49	Stopped due to low demand and high frequency
		18.06.14	09.10	18.06.14	11.20	Tripped on loss of excitation
		21.06.14	17.56	21.06.14	18.48	Due to Heavy Jerk (Due to 220 KV Pragati-Sarita Vihar line tripped)
		25.06.14	05.00	25.06.14	06.10	Machine tripped due to failure of Grid
		25.06.14	14.55	25.06.14	15.10	Due to Jerk both 160 MVA Tx. Tripped
		30.06.14	05.02	30.06.14	06.05	machine tripped due to failure of auxiliary Supply
		30.06.14	13.32	30.06.14	17.06	Stopped as per SLDC as generation not required in OC mode
		02.07.14	14.02	02.07.14	14.58	Machine tripped due to both 160MVA Trfs. tripped from 220 KVA side.
		06.07.14	14.15	07.07.14	12.15	Stopped due to low demand and high frequency
		07.07.14	12.15	07.07.14	17.08	Machine could not be taken on load due to leakage of oil.
		09.07.14	17.20	10.07.14	17.10	Machine tripped due to tripping of AOP.
		10.07.14	17.35	10.07.14	18.34	Machine tripped due to loss of excitation.
		17.07.14	21.16	18.07.14	03.45	Stopped due to low demand and high frequency
		18.07.14	03.45	18.07.14	12.45	Due to failure of auxiliary supply
		18.07.14	12.45	19.07.14	18.32	Stopped due to low demand and high frequency
		25.07.14	08.01	31.07.14	07.58	
		04.08.14	19:18	06.08.14	13:51	
		06-08-14	15:20	06-08-14	17:40	
07-08-14	09:46	19-08-14	11:40			
28-08-14	17:54	20-09-14	17.12			

Unit No	Capacity in MW	Outage		Synchronization		Reason of Outage
		Date	Time	Date	Time	
2	30	01.02.14	17.00	30.09.14	23.59	Machine stopped due to high vibration

Unit No	Capacity in MW	Outage		Synchronization		Reason of Outage
		Date	Time	Date	Time	
3	30	27.03.14	16.38	15.04.14	17.50	Stopped due to low demand and high frequency
		15.04.14	18.38	15.04.14	19.05	Machine tripped due to grid disturbance
		18.04.14	17.47	18.04.14	18.55	Tripped on electrical trouble normal shutdown
		06.05.14	11.00	06.05.14	15.05	Stopped due to LTTH High
		06.05.14	15.15	06.05.14	17.30	
		07.05.14	10.46	07.05.14	19.31	
		12.05.14	17.21	12.05.14	18.05	Tripped on loss of flame
		13.05.14	00.22	13.05.14	00.54	Stopped due to low demand and high frequency
		13.05.14	20.25	22.05.14	12.10	
		25.05.14	00.58	25.05.14	01.26	
		30.05.14	16.55	30.05.14	17.25	Due to trid disturbance machine came on FSNL
		04.06.14	14.47	04.06.14	16.10	Machine tripped due to Middle section of Base radiator punctured due to falling of angle from APRDS Floor
		09.06.14	13.12	09.06.14	13.36	Machine came on FSNL as the 220 KV Bus became dead at IP Ext end.
		20.06.14	21.02	30.06.14	12.50	Machine started but could not be taken on load due to failure of diesel Engine
		02.07.14	14.02	02.07.14	14.58	Machine came on FSNL both 160MVA Trfs. tripped from 220 KVA side.
		17.07.14	21.14	18.07.14	03.45	Stopped due to low demand and high frequency
		18.07.14	03.45	19.07.14	17.22	Due to failure of auxillary supply
		31.07.14	00.12	31.07.14	15.24	Machine tripped as both 160 MVA Tr-I & II tripped
		04-08-14	14:05	06-08-14	10:22	Stopped due to low demand and high frequency
		06-08-14	15:22	16-08-14	14:45	
16-08-14	21:31	28-08-14	17:10			

Unit No	Capacity in MW	Outage		Synchronization		Reason of Outage
		Date	Time	Date	Time	
4	30	27.03.14	18.30	06.06.14	12.30	Machine is under shutdown for HGPI
		09.06.14	13.12	09.06.14	13.34	Machine came on FSNL as the 220 KV Bus became dea at IP Ext end.
		21.06.14	17.56	21.06.14	19.05	Came on FSNL due to tripping of 160 MVA Tr-1& II.
		25.06.14	05.01	25.06.14	06.45	Came on FSNL due to tripping of 160 MVA Tr-1& II.
		25.06.14	08.45	25.06.14	17.26	Machine could not be taken on load due Diode Rotating diode fault fault on protection panel.
		30.06.14	05.30	30.06.14	06.10	machine tripped due to failure of auxiliary Supply
		02.07.14	14.02	02.07.14	14.47	Machine came on FSNL both 160MVA Trfs. tripped from 220 KVA side.
		17.07.14	23.46	18.07.14	03.45	Machine tripped due to both 160MVA Trfs. tripped .
		18.07.14	03.45	18.07.14	12.42	Due to failure of auxillary supply
		29.07.14	09.45	31.07.14	03.14	Stopped due to low demand and high frequency
		31.07.14	04.50	31.07.14	06.35	Machine tripped as both 160 MVA Tr-I & II tripped
		04-08-14	19:09	06-08-14	10:28	Stopped due to low demand and high frequency
		06-08-14	13:01	16-08-14	14:47	
		16-08-14	21:32	27-08-14	11:08	



Unit No	Capacity in MW	Outage		Synchronization		Reason of Outage
		Date	Time	Date	Time	
5	30	12.04.14	09.50	12.04.14	10.41	Machine tripped due to grid disturbance
		15.04.14	18.38	15.04.14	18.48	
		07.05.14	13.30	13.05.14	18.50	Machine tripped due to LTTH High . After that it is not available due to problem in Diesel engine.
		25.05.14	00.58	25.05.14	01.30	Due to trid disturbance machine came on FSNL
		30.05.14	16.55	30.05.14	19.15	
		06.06.14	02.35	06.06.14	11.30	Stopped due to low demand and high frequency
		06.06.14	11.30	06.06.14	17.15	Machine tripped on high Exhaust temperature.
		09.06.14	13.12	09.06.14	13.20	Machine came on FSNL as the 220 KV Bus became dea at IP Ext end.
		20.06.14	10.50	20.06.14	10.56	machine came on FSNL due to tripping of 7.5 MVA Auxiliary Transformer due to jerk.
		21.06.14	17.56	21.06.14	18.31	Machine came on FSNL as the 220 KV Bus became dea at IP Ext end.
		25.06.14	05.01	25.06.14	08.45	Machine came on FSNL as the 220 KV Bus became dea at IP Ext end.
		25.06.14	08.45	25.06.14	11.02	machine could not be taken on load due to starting device trip.
		25.06.14	14.45	25.06.14	18.09	Machine tripped as the 220 KV Bus became dea at IP Ext end.
		26.06.14	02.46	26.06.14	15.13	Stopped due to low demand and high frequency
		29.06.14	00.05	30.06.14	17.10	
		01.07.14	01.45	02.07.14	17.08	
		03.07.14	02.45	03.07.14	15.40	
		17.07.14	23.46	18.07.14	03.45	Machine tripped due to both 160MVA Trfs. tripped .
		18.07.14	03.45	18.07.14	12.52	Due to failure of auxillary supply
		31.07.14	00.12	31.07.14	00.46	Machine tripped as both 160 MVA Tr-I & II tripped
31.07.14	04.50	01-08-14	14:44	Machine tripped as both 160 MVA Tr-I & II tripped and not taken on load due to no demand from SLDC		
01-08-14	16:48	07-08-14	14:50	Stopped due to low demand and high frequency		
31-08-14	13:45	09-09-14	19:18			
20-09-14	12:15	30-09-14	23:59			

Unit No	Capacity in MW	Outage		Synchronization		Reason of Outage
		Date	Time	Date	Time	
6	30	12.04.14	09.50	12.04.14	09.55	Machine tripped due to grid disturbance
		15.04.14	18.38	15.04.14	18.50	
		30.05.14	16.55	30.05.14	17.23	Due to trid disturbance machine came on FSNL
		02.06.14	03.27	02.06.14	04.10	Due to tripping of 20 MVA Tr. Machine came on FSNL
		03.06.14	19.02	03.06.14	20.07	Due to tripping of 6.6 Bus Coupler machine came on FSNL
		06.06.14	02.32	06.06.14	11.30	Stopped due to low demand and high frequency
		06.06.14	11.30	06.06.14	18.00	machine not taken on load due to problem in Diesel Engine
		06.06.14	18.00	11.06.14	11.45	Stopped due to low demand and high frequency
		21.06.14	17.56	21.06.14	18.42	Machine came on FSNL as the 220 KV Bus became dea at IP Ext end.
		25.06.14	05.01	25.06.14	05.28	Machine came on FSNL as the 220 KV Bus became dea at IP Ext end.
		25.06.14	14.45	25.06.14	15.10	Came on FSNL due to tripping of 160 MVA Tr-1& II.
		26.06.14	02.47	26.06.14	18.02	Stopped due to low demand and high frequency
		29.06.14	00.02	30.06.14	17.41	
		01.07.14	01.50	02.07.14	17.01	
		03.07.14	02.45	03.07.14	11.25	Machine came on FSNL both 160MVA Trfs. Tripped.
		03.07.14	15.52	04.07.14	17.10	
		17.07.14	23.46	18.07.14	01.56	Due to failure of auxillary supply
		18.07.14	02.10	18.07.14	13.29	Stopped due to low demand and high frequency
		20.07.14	08.16	22.07.14	11.14	
		29.07.14	09.45	04-08-14	11:14	
05-08-14	03:07	05-08-14	09:43			
30-08-14	09:15	09-09-14	19:22			
20-09-14	12:17	30-09-14	23:59			

Unit No	Capacity in MW	Outage		Synchronization		Reason of Outage
		Date	Time	Date	Time	
STG-1	30	27.03.14	13.20	15.04.14	23.36	Stopped due to low demand and high frequency
		15.04.14	23.39	16.04.14	00.38	Gen. class A trip
		16.04.14	00.52	16.04.14	12.20	
		16.04.14	16.20	16.04.14	22.00	
		16.04.14	22.00	23.04.14	22.54	Stopped due to low demand and high frequency
		24.04.14	02.30	24.04.14	04.02	Turbine shaft vibration very high at bearing no 3
		24.04.14	05.30	24.04.14	11.35	
		26.04.14	14.40	26.04.14	15.22	
		01.05.14	20.40	02.05.14	05.45	Machine manually tripped due to heavy abnormal sound in CEP
		04.05.14	10.10	04.05.14	15.30	G.T. stopped due to LTTH High, so STG stopped
		06.05.14	17.20	06.05.14	21.30	Machine tripped due to Oil pressure problem
		12.05.14	22.18	12.05.14	23.10	Tripped on Trip oil pressure very low
		14.05.14	12.05	14.05.14	14.58	Tripped on Class A relay and 40G relay operated
		25.05.14	00.58	25.05.14	03.30	Tripped due to grid disturbance
		25.05.14	03.30	25.05.14	21.30	machine under shutdown due to truning gear problem
		25.05.14	21.30	26.05.14	21.05	Stopped due to low demand and high frequency
		27.05.14	08.46	27.05.14	17.30	Machine tripped due to low vacuum
		27.05.14	17.30	28.05.14	23.52	Stopped due to low demand and high frequency
		29.05.14	09.20	29.05.14	10.07	Tripped on trip oil pressure very low
		29.05.14	12.38	29.05.14	14.04	
		30.05.14	16.55	30.05.14	19.05	Tripped due to grid disturbance
		02.06.14	03.27	02.06.14	07.03	Due to tripping of 20 MVA Tr. Machine tripped
		03.06.14	19.02	03.06.14	22.07	Due to tripping of 6.6 Bus Coupler machine tripped
		09.06.14	13.12	09.06.14	14.40	Machine came on FSNL as the 220 KV Bus became dead at IP Ext end.
		13.06.14	23.10	14.06.14	02.15	Machine tripped due to tripping of GT#1 on loss of Excitation.
		14.06.14	02.15	16.06.14	15.18	Stopped due to low demand and high frequency
		18.06.14	09.10	18.06.14	12.50	Machine tripped due to tripping of GT#1 on loss of Excitation.
		20.06.14	10.50	20.06.14	17.20	machine tripped due to tripping of 7.5 MVA Auxiliary Trr due to jerk.
		21.06.14	17.56	21.06.14	20.28	Due to Heavy Jerk,GT and STG tripped
		25.06.14	05.01	25.06.14	07.40	Due to Jerk machine tripped
		25.06.14	14.45	25.06.14	16.13	Due to Jerk both 160 MVA Tx. Tripped
		30.06.14	05.02	30.06.14	23.56	Machine tripped due to tripping of Auxilairy Transformer.
		01.07.14	12.13	01.07.14	13.10	Machine tripped due to jerk,bus coupler of 6.6KV bus bar tripped
		02.07.14	14.02	02.07.14	16.00	Machine tripped due to both 160MVA Trs. tripped
		06.07.14	14.15	07.07.14	12.15	Stopped due to low demand and high frequency
		07.07.14	12.15	07.07.14	19.30	Machine could not be taken on load due to non availability of GT#1.
		09.07.14	17.20	10.07.14	20.08	Machine tripped due to tripping of AOP of GT#1..
		12.07.14	21.40	12.07.14	22.30	Machine tripped due to failure of Auxiliary supply
		17.07.14	21.16	18.07.14	03.45	Stopped due to low demand and high frequency
		18.07.14	03.45	18.07.14	12.45	Due to failure of auxillary supply
18.07.14	12.45	19.07.14	20.35	Stopped due to low demand and high frequency		
25.07.14	08.01	31.07.14	14.10			
04-08-14	19:11	06-08-14	19:33			
06-08-14	19:44	06-08-14	23:26	Stopped due to oil leakage in servo motor.		

STG-1	30	06-08-14	23:32	12-08-14	12:00	Stopped due to oil leakage in servo motor.
		12-08-14	12:00	16-08-14	20:15	Stopped due to low demand and high frequency
		16-08-14	20:15	16-08-14	22:15	Problem in DC EOP
		16-08-14	22:15	19-08-14	14:55	Stopped due to low demand and high frequency
		28-08-14	17:54	20-09-14	12:15	
		20-09-14	12:15	20-09-14	20:15	Machine could not be taken due to water leakage in HRSG#1
		24-09-14	04:17	24-09-14	05:18	Tripped due to Trip oil pressure very low

Unit No	Capacity in MW	Outage		Synchronization		Reason of Outage
		Date	Time	Date	Time	
STG-2	30	27.03.14	16.45	16.04.14	01.50	Stopped due to low demand and high frequency
		18.04.14	17.47	18.04.14	20.40	Machine tripped due to tripping of G.T.
		06.05.14	11.05	06.05.14	23.59	G.T. stopped due to LTTH high, so STG stopped
		07.05.14	10.46	07.05.14	23.10	
		12.05.14	17.22	12.05.14	19.05	Tripped due to tripping of G.T. (machine running on single G.T.)
		13.05.14	00.22	13.05.14	01.40	
		13.05.14	20.25	22.05.14	15.50	Stopped due to low demand and high frequency
		25.05.14	00.58	25.05.14	02.05	Tripped due to grid disturbance
		30.05.14	00.01	30.05.14	23.56	Machine not available due to non availability of DC EOP
		02.06.14	03.27	02.06.14	06.12	Due to tripping of 20 MVA Tr. Machine tripped
		04.06.14	10.20	04.06.14	10.38	Machine tripped due to malfunction of MS-14 valve
		04.06.14	14.47	04.06.14	16.48	STG tripped due to tripping of GT#3 .
		09.06.14	13.12	09.06.14	14.25	Machine tripped due to Grid disturbance
		17.06.14	18.43	17.06.14	19.28	Machine tripped on low vacum as drum pr could not be maintained due to tripping of BFP-2A.
		20.06.14	10.50	20.06.14	11.50	Machine tripped due to tripping of Auxilairy Transformer.
		21.06.14	17.56	21.06.14	20.35	Due to Heavy Jerk,GT and STG tripped
		22.06.14	02.00	22.06.14	03.09	Machine tripped on Turbine RJB shaft vibration very high.
		25.06.14	05.01	25.06.14	08.45	Machine tripped due to failure of Grid
		25.06.14	08.45	25.06.14	19.28	machine could not be taken as both GT 3 & 4 were not available
		30.06.14	05.30	30.06.14	07.06	Machine tripped due to tripping of Auxilairy Transformer.
		01.07.14	12.13	01.07.14	14.01	Machine tripped due to jerk,bus coupler of 6.6KV bus bar tripped
		02.07.14	13.58	02.07.14	15.10	Machine tripped due to heavy jerk occurred in control room.
		12.07.14	11.24	12.07.14	12.45	Machine tripped on low vaccum as Auxiliary supply failed to CEP & BFP due to tripping of 6.6 KV Bus Coupler
		17.07.14	23.46	18.07.14	03.45	Machine tripped due to both 160MVA Trfs. tripped .
		18.07.14	03.45	18.07.14	15.53	Due to failure of auxillary supply
		23.07.14	09.19	23.07.14	11.38	Machine tripped due to malfunctioning of relay.
		31.07.14	00.12	31.07.14	08.40	Machine tripped as both 160 MVA Tr-I & II tripped
		04-08-14	19:11	06-08-14	15:00	Stopped due to low demand and high frequency
		06-08-14	15:00	08-08-14	10:45	Machine not taken due to problem in ESV
		08-08-14	10:45	16-08-14	19:15	Stopped due to low demand and high frequency
		16-08-14	19:15	26-08-14	21:45	Not available due to problem in ESV
		26-08-14	21:45	27-08-14	13:48	Stopped due to low demand and high frequency
27-08-14	13:53	27-08-14	14:48	Tripped due to false alarm of housing vibration.		

Unit No	Capacity in MW	Outage		Synchronization		Reason of Outage
		Date	Time	Date	Time	
STG-3	30	12.04.14	09.50	12.04.14	11.34	Machine tripped due to grid disturbance
		15.04.14	18.38	15.04.14	21.15	
		10.05.14	17.45	10.05.14	19.08	Machine tripped due to card malfunction
		25.05.14	00.58	25.05.14	02.15	Machine tripped due to grid disturbance
		30.05.14	16.55	30.05.14	18.25	
		02.06.14	03.27	02.06.14	05.07	Due to tripping of 20 MVA Tr. Machine tripped
		03.06.14	09.12	11.06.14	10.59	Machine stopped due to Fire at Bearing No.#1
		21.06.14	17.56	21.06.14	21.30	Due to Heavy Jerk,GT and STG tripped
		25.06.14	05.01	25.06.14	08.05	Machine tripped due to failure of Grid
		25.06.14	14.05	25.06.14	22.27	Machine tripped manually due to fire observed at bearing #1.
		26.06.14	01.51	26.06.14	21.43	
		27.06.14	02.50	27.06.14	11.45	
		27.06.14	12.56	28.06.14	12.00	
		28.06.14	13.10	05.07.14	21.43	Machine not available due to leakage of oil from bearing#1
		09.07.14	22.15	09.07.14	23.10	Machine tripped due to class-A relay tripped.Relays 86X
		12.07.14	11.24	12.07.14	12.03	Machine tripped on low vacuum as Auxiliary supply failed to CEP & BFP due to tripping of 6.6 KV Bus Coupler
		17.07.14	23.46	18.07.14	03.45	Machine tripped due to both 160MVA Trs. tripped .
		18.07.14	03.45	18.07.14	14.42	Due to failure of auxiliary supply
		31.07.14	00.12	31.07.14	03.52	Machine tripped as both 160 MVA Tr-I & II tripped
		31.07.14	04.50	31.07.14	23.59	Machine tripped as both 160 MVA Tr-I & II tripped and not taken on load due to no demand from SLDC
		01-08-14	00:00	04-08-14	13:58	Stopped due to low demand and high frequency
		04-08-14	15:38	04-08-14	16:20	Machine tripped due to following relays operation-86GA1,86GB1 & Aux. relay-60AX
		04-08-14	16:35	04-08-14	19:03	Stopped due non availability of both BFPs.
31-08-14	13:45	10-09-14	00:58	Stopped due to low demand and high frequency		
20-09-14	12:17	26-09-14	15:30	Machine stopped due to condenser cleaning		
26-09-14	15:30	30-09-14	23:59	Stopped due to low demand and high frequency		

(C) PRAGATI

Unit No	Capacity in MW	Outage		Synchronization		Reason of Outage
		Date	Time	Date	Time	
1	104	24.04.14	17.21	24.04.14	21.14	Tripped On internal fault
		24.04.14	21.35	24.04.14	23.26	Tripped on internal fault
		28.04.14	00.00	28.04.14	10.00	Stopped due to less demand and high frequency
		28.04.14	10.00	18.06.14	15.06	Stopped for MI
		21.06.14	11.11	22.06.14	22.11	To attend leakage after planned shutdown of MI
		25.06.14	05.01	25.06.14	06.00	Tripped due to grid disturbance
		02.07.14	14.05	02.07.14	15.34	Tripped due to grid disturbance
		11.07.14	14.15	11.07.14	14.45	Tripped on internal fault
		21.07.14	20.13	21.07.14	21.50	
		22.07.14	15.26	22.07.14	16.11	
		23.07.14	00.00	23.07.14	04.24	Stopped to attend internal fault
		06.08.14	05.46	06.08.14	14.02	GT#1 Stopped to attend Internal Fault.
		15.08.14	10.00	15.08.14	21.00	GT#1 stopped by SLDC due to low power demand in Delhi
		15.08.14	21.00	16.08.14	07.46	GT#1 can not be started as per schedule due to Internal fault.
		16.08.14	13.21	17.08.14	03.24	GT#1 stopped to attend Internal Fault.
		19.08.14	11.19	19.08.14	11.48	
		19.08.14	12.42	19.08.14	13.40	

Unit No	Capacity in MW	Outage		Synchronization		Reason of Outage
		Date	Time	Date	Time	
2	104	08.04.14	08.58	27.04.14	22.31	Stopped for CI
		02.05.14	15.29	02.05.14	16.59	Tripped on internal fault
		04.05.14	15.37	04.05.14	16.39	
		25.05.14	00.58	25.05.14	02.50	Tripped due to grid disturbance
		14.06.14	13.35	14.06.14	14.06	Tripped on internal fault
		06.07.14	17.14	06.07.14	18.04	Tripped due to grid disturbance
		28.08.14	00.16	28.08.14	02.22	Tripped on internal fault

Unit No	Capacity in MW	Outage		Synchronization		Reason of Outage
		Date	Time	Date	Time	
STG	122	11.04.14	11.04	11.04.14	11.57	STG tripped on internal fault
		16.04.14	00.00	19.05.14	02.43	STG stopped for bearing inspection and condenser chemical cleaning.
		25.05.14	00.58	25.05.14	03.53	Tripped due to grid disturbance
		27.05.14	10.00	27.05.14	11.18	Tripped on internal fault
		30.05.14	16.56	30.05.14	18.12	Tripped due to grid disturbance
		09.06.14	13.12	09.06.14	13.57	
		13.06.14	02.36	13.06.14	03.41	Tripped on internal fault
		16.06.14	11.41	16.06.14	12.23	
		21.06.14	17.55	21.06.14	18.40	
		25.06.14	05.01	25.06.14	06.58	Tripped due to grid disturbance
		02.07.14	14.05	02.07.14	14.14	
		06.07.14	17.14	06.07.14	18.29	Tripped due to grid disturbance
29.07.14	04.44	29.07.14	05.38	STG tripped on internal fault		

(D) **BADARPUR THERMAL POWER STATION**

Unit	Capacity in MW	Outage		Synchronization		Reason of Outage
		Date	Time	Date	Time	
1	95	14.05.14	17.37	19.05.14	09.36	Stopped due to low demand and high frequency
		30.05.14	17.08	30.05.14	19.17	Tripped due to grid disturbance
		20.06.14	12.15	21.05.14	06.25	Water wall leakage
		17.07.14	23.22	18.07.14	05.33	Battery / DC System problem
		18.07.14	05.45	18.07.14	07.00	Bus dead, PA Fan rotating reverse direction
		18.07.14	16.19	28.07.14	08.09	Stopped due to low demand and high frequency
		22.08.14	02.30	26.08.14	00.00	Coal supply to bunkers
		26.08.14	00.00	30.09.14	23.59	Coal shortage

Unit	Capacity in MW	Outage		Synchronization		Reason of Outage
		Date	Time	Date	Time	
2	95	25.04.14	12.17	30.04.14	21.27	Stopped due to low demand and high frequency
		03.05.14	17.41	03.05.14	18.58	Tripped due to grid disturbance
		04.05.14	20.51	05.05.14	00.16	AVR & Excitation system
		22.05.14	09.27	31.05.14	12.13	CW Pum pit cleaning
		06.07.14	01.50	06.07.14	09.50	LT Bus problem
		06.07.14	09.50	08.07.14	06.25	ID Fan bearing problem
		24.07.14	02.48	24.07.14	04.34	Furnance disturbance
		30.07.14	20.12	31.07.14	23.59	Stopped due to low demand and high frequency
		01.08.14	22.00	26.08.14	00.00	Planned shutdown
		26.08.14	00.00	27.09.14	13.30	Coal shortage
27.09.14	13.30	30.09.14	23.59	Stopped due to low demand and high frequency		

Unit	Capacity in MW	Outage		Synchronization		Reason of Outage
		Date	Time	Date	Time	
3	95	11.03.14	21.15	01.05.14	13.55	Stopped due to low demand and high frequency
		03.05.14	17.41	03.05.14	19.43	Tripped due to grid disturbance
		10.05.14	15.55	11.05.14	17.22	Water wall leakage (Screentube LHS)
		30.05.14	17.08	30.05.14	20.05	Tripped due to grid disturbance
		30.05.14	21.22	30.05.14	22.41	AVR & Excitation system problem
		30.05.14	23.53	30.05.14	23.59	
		14.06.14	15.18	14.06.14	19.44	Generator Protection
		21.06.14	14.14	22.06.14	14.34	Water wall leakage
		26.06.14	20.20	28.06.14	01.18	Economizer tube leakage
		08.07.14	08.58	08.07.14	10.16	Furnance disturbance
		11.07.14	10.37	11.07.14	11.57	C&I induced (Axial shift)
		24.07.14	00.46	31.07.14	23.59	Stopped due to low demand and high frequency
		20.08.14	00.00	26.08.14	00.00	Coal supply to bunkars
		26.08.14	00.00	30.09.14	23.59	Major planned shutdown

Unit	Capacity in MW	Outage		Synchronization		Reason of Outage
		Date	Time	Date	Time	
4	210	05.03.14	02.11	21.04.14	15.16	Planned shutdown
		30.04.14	14.18	01.05.14	21.00	Economizer Tube leakage
		01.05.14	21.00	05.05.14	11.13	Tripped due to grid disturbance
		25.05.14	20.26	28.05.14	07.55	Reheater tube leakage
		30.05.14	17.08	30.05.14	22.08	Tripped due to grid disturbance
		04.08.14	11.49	04.08.14	17.52	Furnance disturbance
		22.08.14	09.42	22.08.14	13.02	Differential relay malfunction
		29.08.14	00.28	01.09.14	10.35	Coal shortage
		01.09.14	13.35	01.09.14	22.52	UAT Differential protection
		09.09.14	13.33	14.09.14	16.32	Coal shortage
		26.09.14	08.35	26.09.14	10.57	Transformer winding temp high

Unit	Capacity in MW	Outage		Synchronization		Reason of Outage
		Date	Time	Date	Time	
5	210	23.04.14	00.02	25.04.14	05.05	APH outlet Baffles found broken
		12.05.14	04.02	14.05.14	08.27	APH Outlet deflectors broken
		07.06.14	22.47	08.06.14	23.22	CW Pump trip
		13.06.14	11.01	13.06.14	15.51	AVR & Excitation system problem
		17.06.14	23.06	19.06.14	04.00	Economizer tube leakage
		19.06.14	04.00	20.06.14	16.45	PA Fan lub oil system problem
		07.07.14	20.01	09.07.14	03.03	Water wall leakage
		27.07.14	16.38	30.07.14	02.50	Water wall leakage

(E) BAWANA CCGT POWER STATION

Unit	Capacity in MW	Outage		Synchronization		Reason of Outage
		Date	Time	Date	Time	
1	216	25.09.13	12.05	10.06.14	18.34	Stopped due to low demand and high frequency
		13.06.14	09.20	16.06.14	16.48	
		21.06.14	01.25	23.06.14	08.34	
		28.06.14	06.42	11.07.14	11.29	
		12.07.14	09.50	21.07.14	08.20	
		09.08.14	00.19	09.08.14	02.21	Failure of compressor bleed solenoid valve
		09.08.14	18.59	09.08.14	21.24	
		10.08.14	10.30	11.08.14	05.57	

Unit	Capacity in MW	Outage		Synchronization		Reason of Outage
		Date	Time	Date	Time	
2	216	11.10.13	10.40	29.04.14	16.10	Stopped due to low demand and high frequency
		29.04.14	16.37	29.04.14	17.52	Closure of gas valve
		08.05.14	18.55	22.05.14	15.59	Stopped due to low demand and high frequency
		23.05.14	18.26	04.06.14	14.18	
		12.06.14	16.56	18.06.14	18.34	Turbine compartment vent fan pressure switch malfunctioned backing down after wards due to low demand
		23.06.14	05.11	27.06.14	18.58	Purge valve 20 PG-2 misbehaviour, I-P Convertor found misbehaving trip, thereafter shutdown due to low demand and high frequency
		11.07.14	17.05	12.07.14	06.50	Stopped due to low demand and high frequency
		17.07.14	22.16	19.08.14	14.10	
		23.08.14	12.45	23.08.14	14.48	HGTMCC Supply failure
31.08.14	14.55	31.08.14	23.59	Stopped due to low demand and high frequency		

Unit	Capacity in MW	Outage		Synchronization		Reason of Outage
		Date	Time	Date	Time	
3	216	28.10.13	00.00	31.08.14	23:59	Commissioned on 28.10.13 and Stopped due to low demand and high frequency

Unit	Capacity in MW	Outage		Synchronization		Reason of Outage
		Date	Time	Date	Time	
4	216	27.02.14	00.00	31.08.14	23:59	Commissioned on 27.02.14 and Stopped due to low demand and high frequency

Unit	Capacity in MW	Outage		Synchronization		Reason of Outage
		Date	Time	Date	Time	
STG-1	254	11.10.13	10.50	23.05.14	00.30	Stopped due to low demand and high frequency
		23.05.14	18.28	04.06.14	14.18	
		12.06.14	17.13	12.06.14	18.03	LP drum level high
		13.06.14	09.20	16.06.14	21.21	Stopped due to low demand and high frequency
		23.06.14	05.11	23.6.14	12.18	
		12.07.14	15.00	15.07.14	23.59	
		17.07.14	22.18	21.07.14	08.43	
		06.08.14	12.49	06.08.14	14.25	HRSg trip due to BFP Trip
		09.08.14	00.19	09.08.14	05.05	G.T. Trip
		09.08.14	18.59	10.08.14	00.08	
10.08.14	10.30	11.08.14	09.03			

Unit	Capacity in MW	Outage		Synchronization		Reason of Outage
		Date	Time	Date	Time	
STG-2	254	27.03.14	00.00	31.08.14	23:59	Commissioned on 27.03.14 and Stopped due to low demand and high frequency

(F) RITHALA POWER STATION

Unit	Capacity in MW	Outage		Synchronization		Reason of Outage
		Date	Time	Date	Time	
1	31.8	19.03.13	17:32	30.09.14	23:59	Stopped due to low demand and high frequency

Unit	Capacity in MW	Outage		Synchronization		Reason of Outage
		Date	Time	Date	Time	
2	31.8	07.06.13	22:41	30.09.14	23:59	Stopped due to low demand and high frequency

Unit	Capacity in MW	Outage		Synchronization		Reason of Outage
		Date	Time	Date	Time	
STG	31.8	07.06.13	22:38	30.09.14	23:59	Stopped due to low demand and high frequency



4

**ALLOCATION OF POWER TO DELHI**

A)

**Allocation of power to Delhi from Unallocated quota of Central Sector Generating Stations to Delhi w.e.f. 27.03.2014****Time block 00.00hrs. to 24.00hrs. @ 0% allocation from Unallocated Quota**

Name of the Stn	Installed capacity	Total Un-allocated	Basic Allocation	Basic Allocation at periphery	Allocation out of Unallocated Quota	Allocation out of Un-allocation Quota at Delhi periphery	Total allocation at Delhi periphery
1	2	3	4	5	6	7	(8)=(5)+(7)
<b><u>NTPC STATIONS</u></b>							
Singrauli STPS	2000	300	150	130	0	0	130
Rihand-I	1000	150	100	87	0	0	87
Rihand Stage -II	1000	150	126	109	0	0	109
Rihand Stage -III	1000	150	132	115	0	0	115
ANTA GPS	419	63	44	41	0	0	41
Auriya GPS	663.36	99	72	67	0	0	67
Dadri GPS	829.78	129	91	85	0	0	85
Dadri NCTPS (Th)	840	0	756	657	0	0	657
Dadri NCTPS (Th) Stage-II	980	147	735	639	0	0	639
Unchahaar-I TPS	420	20	24	21	0	0	21
Unchahaar-II TPS	420	63	47	41	0	0	41
Unchahaar-III TPS	210	31	29	25	0	0	25
<b>TOTAL</b>	<b>9782</b>	<b>1302</b>	<b>2306</b>	<b>2016</b>	<b>0</b>	<b>0</b>	<b>2016</b>
<b><u>NHPC</u></b>							
Baira Suil HPS	180	0	20	19	0	0	19
Salal HPS	690	0	80	76	0	0	76
Tanakpur HEP	94	0	12	11	0	0	11
Chamera HEP	540	0	43	41	0	0	41
Chamera-II HEP	300	54	40	38	0	0	38
Chamera-III HEP	231	35	29	28	0	0	28
URI-I HEP	480	0	53	50	0	0	50
URI-II HEP	180	0	24	23	0	0	23
Sewa HEP	120	18	16	15	0	0	15
Dhauri Ganga HEP	280	42	37	35	0	0	35
Dulhasti HEP	390	58	50	48	0	0	48
Parbati-III HEP	390	50	50	47	0	0	47
<b>TOTAL</b>	<b>3875</b>	<b>256</b>	<b>454</b>	<b>431</b>	<b>0</b>	<b>0</b>	<b>431</b>
<b><u>NPC</u></b>							
Narora APS	440	64	47	41	0	0	41
RAPP (C )	440	64	56	49	0	0	49
<b>TOTAL</b>	<b>880</b>	<b>128</b>	<b>103</b>	<b>89</b>	<b>0</b>	<b>0</b>	<b>89</b>
<b><u>SVJNL</u></b>							
Nathpa Jhakri HEP	1500	149	142	135	0	0	135
<b><u>THDC</u></b>							
Tehri Hydro	1000	99	103	98	0	0	98
Koteshwar HEP	400	40	39	37	0	0	37
<b>TOTAL</b>	<b>1400</b>	<b>139</b>	<b>142</b>	<b>135</b>	<b>0</b>	<b>0</b>	<b>135</b>
<b>Total</b>	<b>17437</b>	<b>1974</b>	<b>3147</b>	<b>2807</b>	<b>0</b>	<b>0</b>	<b>2807</b>
<b><u>Allocation from ER and Tala HEP</u></b>							
Farakka	1600	0	22	19	0	0	19
Kahalgaon	840	0	51	43	0	0	43
Talchar	1000	0	0	0	0	0	0
Tala HEP	1020	153	30	25	0	0	25
Kahalgaon-II	1500	0	157	131	0	0	131
<b>Total ER</b>	<b>5960</b>	<b>153</b>	<b>261</b>	<b>217</b>	<b>0</b>	<b>0</b>	<b>217</b>
<b><u>Joint Venture</u></b>							
Jhajjar TPS	1500	114	377	338	0	0	338
Ultra Mega Projects							
Sasan	1320	0	149	128	0	0	128
<b>Grand Total</b>	<b>26217</b>	<b>2241</b>	<b>3933</b>	<b>3491</b>	<b>0</b>	<b>0</b>	<b>3491</b>

**B) Allocation of power to Delhi from Unallocated quota of Central Sector Generating Stations to Delhi w.e.f. 18.06.2014**

**Time block 00.00hrs. to 24.00hrs. @ 0% allocation from Unallocated Quota**

Name of the Stn	Installed capacity	Total Un-allocated	Basic Allocation	Basic Allocation at periphery	Allocation out of Unallocated Quota	Allocation out of Un-allocation Quota at Delhi periphery	Total allocation at Delhi periphery
1	2	3	4	5	6	7	(8)=(5)+(7)
<b><u>NTPC STATIONS</u></b>							
Singrauli STPS	2000	300	150	130	0	0	130
Rihand-I	1000	150	100	87	0	0	87
Rihand Stage -II	1000	150	126	109	0	0	109
Rihand Stage -III	1000	150	132	115	0	0	115
ANTA GPS	419	63	44	41	0	0	41
Auriya GPS	663.36	99	72	67	0	0	67
Dadri GPS	829.78	129	91	85	0	0	85
Dadri NCTPS (Th)	840	0	756	657	0	0	657
Dadri NCTPS (Th) Stage-II	980	147	735	639	0	0	639
Unchahaar-I TPS	420	20	24	21	0	0	21
Unchahaar-II TPS	420	63	47	41	0	0	41
Unchahaar-III TPS	210	31	29	25	0	0	25
<b>TOTAL</b>	<b>9782</b>	<b>1302</b>	<b>2306</b>	<b>2016</b>	<b>0</b>	<b>0</b>	<b>2016</b>
<b><u>NHPC</u></b>							
Baira Suil HPS	180	0	20	19	0	0	19
Salal HPS	690	0	80	76	0	0	76
Tanakpur HEP	94	0	12	11	0	0	11
Chamera HEP	540	0	43	41	0	0	41
Chamera-II HEP	300	54	40	38	0	0	38
Chamera-III HEP	231	35	29	28	0	0	28
URI-I HEP	480	0	53	50	0	0	50
URI-II HEP	180	0	24	23	0	0	23
Sewa HEP	120	18	16	15	0	0	15
Dhuli Ganga HEP	280	42	37	35	0	0	35
Dulhasti HEP	390	58	50	48	0	0	48
Parbati-III HEP	520	66	66	63	0	0	63
<b>TOTAL</b>	<b>4005</b>	<b>272</b>	<b>471</b>	<b>447</b>	<b>0</b>	<b>0</b>	<b>447</b>
<b><u>NPC</u></b>							
Narora APS	440	64	47	41	0	0	41
RAPP (C )	440	64	56	49	0	0	49
<b>TOTAL</b>	<b>880</b>	<b>128</b>	<b>103</b>	<b>89</b>	<b>0</b>	<b>0</b>	<b>89</b>
<b><u>SVJNL</u></b>							
Nathpa Jhakri HEP	1500	149	142	135	0	0	135
<b><u>THDC</u></b>							
Tehri Hydro	1000	99	103	98	0	0	98
Koteshwar HEP	400	40	39	37	0	0	37
<b>TOTAL</b>	<b>1400</b>	<b>139</b>	<b>142</b>	<b>135</b>	<b>0</b>	<b>0</b>	<b>135</b>
<b>Total</b>	<b>17567</b>	<b>1990</b>	<b>3164</b>	<b>2823</b>	<b>0</b>	<b>0</b>	<b>2823</b>
<b><u>Allocation from ER and Tala HEP</u></b>							
Farakka	1600	0	22	19	0	0	19
Kahalgaon	840	0	51	43	0	0	43
Talchar	1000	0	0	0	0	0	0
Tala HEP	1020	153	30	25	0	0	25
Kahalgaon-II	1500	0	157	131	0	0	131
<b>Total ER</b>	<b>5960</b>	<b>153</b>	<b>261</b>	<b>217</b>	<b>0</b>	<b>0</b>	<b>217</b>
<b><u>Joint Venture</u></b>							
Jhajjar TPS	1500	114	52	47	0	0	47
<b><u>Ultra Mega Projects</u></b>							
Sasan	1320	0	149	128	0	0	128
<b>Grand Total</b>	<b>26347</b>	<b>2257</b>	<b>3625</b>	<b>3215</b>	<b>0</b>	<b>0</b>	<b>3215</b>

**C) Allocation of power to Delhi from Unallocated quota of Central Sector Generating Stations to Delhi w.e.f. 21.06.2014**

**Time block 00.00hrs. to 24.00hrs. @ 0% allocation from Unallocated Quota**

Name of the Stn	Installed capacity	Total Un-allocated	Basic Allocation	Basic Allocation at periphery	Allocation out of Unallocated Quota	Allocation out of Un-allocation Quota at Delhi periphery	Total allocation at Delhi periphery
1	2	3	4	5	6	7	(8)=(5)+(7)
<b><u>NTPC STATIONS</u></b>							
Singrauli STPS	2000	300	150	130	0	0	130
Rihand-I	1000	150	100	87	0	0	87
Rihand Stage -II	1000	150	126	109	0	0	109
Rihand Stage -III	1000	150	132	115	0	0	115
ANTA GPS	419	63	44	41	0	0	41
Auriya GPS	663.36	99	72	67	0	0	67
Dadri GPS	829.78	129	91	85	0	0	85
Dadri NCTPS (Th)	840	0	756	657	0	0	657
Dadri NCTPS (Th) Stage-II	980	147	735	639	0	0	639
Unchahaar-I TPS	420	20	24	21	0	0	21
Unchahaar-II TPS	420	63	47	41	0	0	41
Unchahaar-III TPS	210	31	29	25	0	0	25
<b>TOTAL</b>	<b>9782</b>	<b>1302</b>	<b>2306</b>	<b>2016</b>	<b>0</b>	<b>0</b>	<b>2016</b>
<b><u>NHPC</u></b>							
Baira Suil HPS	180	0	20	19	0	0	19
Salal HPS	690	0	80	76	0	0	76
Tanakpur HEP	94	0	12	11	0	0	11
Chamera HEP	540	0	43	41	0	0	41
Chamera-II HEP	300	54	40	38	0	0	38
Chamera-III HEP	231	35	29	28	0	0	28
URI-I HEP	480	0	53	50	0	0	50
URI-II HEP	180	0	24	23	0	0	23
Sewa HEP	120	18	16	15	0	0	15
Dhauri Ganga HEP	280	42	37	35	0	0	35
Dulhasti HEP	390	58	50	48	0	0	48
Parbati-III HEP	520	66	66	63	0	0	63
<b>TOTAL</b>	<b>4005</b>	<b>272</b>	<b>471</b>	<b>447</b>	<b>0</b>	<b>0</b>	<b>447</b>
<b><u>NPC</u></b>							
Narora APS	440	64	47	41	0	0	41
RAPP (C)	440	64	56	49	0	0	49
<b>TOTAL</b>	<b>880</b>	<b>128</b>	<b>103</b>	<b>89</b>	<b>0</b>	<b>0</b>	<b>89</b>
<b><u>SVJNL</u></b>							
Nathpa Jhakri HEP	1500	149	142	135	0	0	135
<b><u>THDC</u></b>							
Tehri Hydro	1000	99	103	98	0	0	98
Koteshwar HEP	400	40	39	37	0	0	37
<b>TOTAL</b>	<b>1400</b>	<b>139</b>	<b>142</b>	<b>135</b>	<b>0</b>	<b>0</b>	<b>135</b>
<b>Total</b>	<b>17567</b>	<b>1990</b>	<b>3164</b>	<b>2823</b>	<b>0</b>	<b>0</b>	<b>2823</b>
<b><u>Allocation from ER and Tala HEP</u></b>							
Farakka	1600	0	22	19	0	0	19
Kahalgaon	840	0	51	43	0	0	43
Talchar	1000	0	0	0	0	0	0
Tala HEP	1020	153	30	25	0	0	25
Kahalgaon-II	1500	0	157	131	0	0	131
<b>Total ER</b>	<b>5960</b>	<b>153</b>	<b>261</b>	<b>217</b>	<b>0</b>	<b>0</b>	<b>217</b>
<b><u>Joint Venture</u></b>							
Jhajjar TPS	1500	114	0	0	0	0	0
Ultra Mega Projects							
Sasan	2640	0	297	255	0	0	255
<b>Grand Total</b>	<b>27667</b>	<b>2257</b>	<b>3721</b>	<b>3296</b>	<b>0</b>	<b>0</b>	<b>3296</b>

**D) Allocation of power to Delhi from Unallocated quota of Central Sector Generating Stations to Delhi w.e.f. 10.09.2014**

**Time block 00.00hrs. to 24.00hrs. @ 0% allocation from Unallocated Quota**

Name of the Stn	Installed capacity	Total Un-allocated	Basic Allocation	Basic Allocation at periphery	Allocation out of Unallocated Quota	Allocation out of Un-allocation Quota at Delhi periphery	Total allocation at Delhi periphery
1	2	3	4	5	6	7	(8)=(5)+(7)
<b><u>NTPC STATIONS</u></b>							
Singrauli STPS	2000	300	150	130	0	0	130
Rihand-I	1000	150	100	87	0	0	87
Rihand Stage -II	1000	150	126	109	0	0	109
Rihand Stage -III	1000	150	132	115	0	0	115
ANTA GPS	419	63	44	41	0	0	41
Auriya GPS	663.36	99	72	67	0	0	67
Dadri GPS	829.78	129	91	85	0	0	85
Dadri NCTPS (Th)	840	0	576	500	0	0	500
Dadri NCTPS (Th) Stage-II	980	147	735	639	0	0	639
Unchahaar-I TPS	420	20	24	21	0	0	21
Unchahaar-II TPS	420	63	47	41	0	0	41
Unchahaar-III TPS	210	31	29	25	0	0	25
<b>TOTAL</b>	<b>9782</b>	<b>1302</b>	<b>2126</b>	<b>1860</b>	<b>0</b>	<b>0</b>	<b>1860</b>
<b><u>NHPC</u></b>							
Baira Suil HPS	180	0	20	19	0	0	19
Salal HPS	690	0	80	76	0	0	76
Tanakpur HEP	94	0	12	11	0	0	11
Chamera HEP	540	0	43	41	0	0	41
Chamera-II HEP	300	54	40	38	0	0	38
Chamera-III HEP	231	35	29	28	0	0	28
URI-I HEP	480	0	53	50	0	0	50
URI-II HEP	180	0	24	23	0	0	23
Sewa HEP	120	18	16	15	0	0	15
Dhauri Ganga HEP	280	42	37	35	0	0	35
Dulhasti HEP	390	58	50	48	0	0	48
Parbati-III HEP	520	66	66	63	0	0	63
<b>TOTAL</b>	<b>4005</b>	<b>272</b>	<b>471</b>	<b>447</b>	<b>0</b>	<b>0</b>	<b>447</b>
<b><u>NPC</u></b>							
Narora APS	440	64	47	41	0	0	41
RAPP (C)	440	64	56	49	0	0	49
<b>TOTAL</b>	<b>880</b>	<b>128</b>	<b>103</b>	<b>89</b>	<b>0</b>	<b>0</b>	<b>89</b>
<b><u>SVJNL</u></b>							
Nathpa Jhakri HEP	1500	149	142	135	0	0	135
<b><u>THDC</u></b>							
Tehri Hydro	1000	99	103	98	0	0	98
Koteshwar HEP	400	40	39	37	0	0	37
<b>TOTAL</b>	<b>1400</b>	<b>139</b>	<b>142</b>	<b>135</b>	<b>0</b>	<b>0</b>	<b>135</b>
<b>Total</b>	<b>17567</b>	<b>1990</b>	<b>2984</b>	<b>2667</b>	<b>0</b>	<b>0</b>	<b>2667</b>
<b><u>Allocation from ER and Tala HEP</u></b>							
Farakka	1600	0	22	19	0	0	19
Kahalgaon	840	0	51	43	0	0	43
Talchar	1000	0	0	0	0	0	0
Tala HEP	1020	153	30	25	0	0	25
Kahalgaon-II	1500	0	157	131	0	0	131
<b>Total ER</b>	<b>5960</b>	<b>153</b>	<b>261</b>	<b>217</b>	<b>0</b>	<b>0</b>	<b>217</b>
<b><u>Joint Venture</u></b>							
Jhajjar TPS	1500	114	0	0	0	0	0
Ultra Mega Projects							
Sasan	2640	0	297	255	0	0	255
<b>Grand Total</b>	<b>27667</b>	<b>2257</b>	<b>3541</b>	<b>3140</b>	<b>0</b>	<b>0</b>	<b>3140</b>

**5 ALLOCATION OF POWER TO DISCOMS**

**A) ALLOCATION OF POWER TO VARIOUS LICENCEES AS PER ORDER OF DERC AND DECISION OF GNCTD FOR ALLOCATION OF CENTRAL SECTOR STATIONS (DADRI THERMAL & BTPS) AND STATE SECTOR GENERATING STATIONS w.e.f. 06.08.2013.**

**(Allocation In % )**

**(A) 10.00hrs. to 17.00hrs.**

SOURCES	LICENSEES					
	NDMC	MES	NDPL	BRPL	BYPL	TOTAL
1. Central Sector without Dadri (Th)	0	0	29.18	43.58	27.24	100.00
2. Dadri (Th)	16.63	0	24.22	36.86	22.39	100.00
3. BTPS	17.73	7.09	21.81	33.2	20.17	100.00
4. RPH	0	0	29.025	44.133	26.842	100.00
5. GT	0	0	29.02	44.16	26.82	100.00
6. Pragati	30.3	0	20.22	30.78	18.7	100.00
7. DVC	0	0	29.18	43.58	27.24	100.00
8. BAWANA CCGT*	7.30	1.82	20.688	30.888	19.304	80.00

**(B) 00.00hrs. to 10.00hrs. and 17.00hrs. to 24.00hrs.**

SOURCES	LICENSEES					
	NDMC	MES	NDPL	BRPL	BYPL	TOTAL
1. Central Sector without Dadri (Th)	0	0	29.18	43.58	27.24	100.00
2. Dadri (Th)	16.53	0	24.22	36.86	22.39	100.00
3. BTPS	17.73	7.09	21.81	33.2	20.17	100.00
4. RPH	0	0	29.025	44.133	26.842	100.00
5. GT	0	0	29.02	44.16	26.82	100.00
6. Pragati	30.3	0	20.22	30.78	18.7	100.00
7. DVC	0	0	29.18	43.58	27.24	100.00
8. BAWANA CCGT*	7.30	1.82	20.688	30.888	19.304	80.00

\* 20% POWER OF BAWANA CCGT ALLOCATED TO HARYANA (10%) & PUNJAB (10%)

**6 POWER AVAILABILITY-DEMAND POSITION AT THE TIME OF PEAK DEMAND MET DURING SEPTEMBER 2014**

All figures in MW

Date	Time of peak demand	Generation within Delhi								Import from the Grid	Schedule from the Grid	OD(-) / UD(+)	Demand met	Shedding	Un-Restricted Demand
		RPH	GT	PPCL	Rithala	Bawana	Towmcl	BTPS	Total						
(1)	(2)	(3)	(4)	(5)	(6)	(7)	(8)		(9)= (3) to (8)	(10)	(11)	(12)= (11) - (10)	(13)= (11)+ (12)	(14)	(15)= (13)+ (14)
1	16.00.11	89	106	285	0	252	12	163	907	3564	3597	-33	4471	0	4471
2	15.17.20	92	106	289	0	261	8	295	1051	3381	3288	93	4432	0	4432
3	15.10.15	92	72	288	0	294	9	328	1083	3330	3282	48	4413	0	4413
4	15.07.34	92	74	271	0	262	11	303	1013	3334	3280	54	4347	0	4347
5	11.26.56	90	72	293	0	251	6	298	1010	3284	3101	183	4294	2	4296
6	19.37.28	92	75	267	0	265	15	309	1023	3095	2867	228	4118	0	4118
7	22.51.21	88	74	268	0	292	12	302	1036	3300	3142	158	4336	0	4336
8	22.04.59	78	71	288	0	297	4	278	1016	3620	3395	225	4636	0	4636
9	22.40.59	79	124	293	0	294	13	163	966	3838	3749	89	4804	13	4817
10	15.30.14	87	142	288	0	296	13	158	984	3602	3431	171	4586	0	4586
11	11.14.41	72	148	290	0	280	13	143	946	3317	3211	106	4263	0	4263
12	15.26.07	36	145	283	0	285	12	151	912	3433	3197	236	4345	0	4345
13	22.44.09	45	150	272	0	288	9	155	919	3342	3269	73	4261	0	4261
14	00.01.23	43	149	270	0	283	14	155	914	3209	2842	367	4123	0	4123
15	22.56.28	32	144	294	0	266	15	302	1053	3444	3308	136	4497	0	4497
16	14.21.28	0	144	286	0	294	15	295	1034	3551	3298	253	4585	0	4585
17	22.56.28	82	144	292	0	303	16	308	1145	3606	3419	187	4751	0	4751
18	22.53.58	82	149	265	0	289	12	312	1109	3773	3612	161	4882	0	4882
19	22.42.41	72	144	291	0	271	12	313	1103	3755	3678	77	4858	0	4858
20	22.54.28	39	108	272	0	296	11	307	1033	3647	3575	72	4680	0	4680
21	00.01.03	40	108	272	0	295	11	307	1033	3528	3376	152	4561	0	4561
22	22.42.51	38	109	263	0	261	13	313	997	3784	3562	222	4781	0	4781
23	00.00.06	74	110	258	0	263	12	316	1033	3538	3329	209	4571	0	4571
24	23.00.39	86	107	259	0	441	14	334	1241	3337	3173	164	4578	2	4580
25	22.53.36	84	108	288	0	277	16	316	1089	3430	3402	28	4519	0	4519
26	19.03.44	34	107	292	0	277	14	317	1041	3469	3385	84	4510	12	4522
27	22.55.56	42	107	268	0	293	17	310	1037	3337	3421	-84	4374	0	4374
28	23.28.54	40	108	267	0	279	15	323	1032	3354	3361	-7	4386	0	4386
29	23.06.15	37	104	296	0	303	13	314	1067	3438	3406	32	4505	42	4547
30	22:57:27	38	105	293	0	304	16	342	1098	3432	3403	29	4530	0	4530

**POWER AVAILABILITY- DEMAND POSITION AT THE TIME OF MAXIMUM UNRESTRICTED DEMAND DURING SEPTEMBER 2014**

Date	Time of peak demand	Generation within Delhi								Import from the Grid	Schedule from the Grid	OD(-)/UD(+)	Demand met	Shedding	Un-Restricted Demand
		RPH	GT	PPCL	Rithala	Bawana	Towmcl	BTPS	Total						
(1)	(2)	(3)	(4)	(5)	(6)	(7)	(8)		(9)= (3) to (8)	(10)	(11)	(12)= (11) - (10)	(13)= (11)+ (12)	(14)	(15)= (13)+ (14)
1	16.00.11	89	106	285	0	252	12	163	907	3564	3597	-33	4471	0	4471
2	15.17.20	92	106	289	0	261	8	295	1051	3381	3288	93	4432	0	4432
3	15.10.15	92	72	288	0	294	9	328	1083	3330	3282	48	4413	0	4413
4	15.07.34	92	74	271	0	262	11	303	1013	3334	3280	54	4347	0	4347
5	11.26.56	90	72	293	0	251	6	298	1010	3284	3101	183	4294	2	4296
6	19.37.28	92	75	267	0	265	15	309	1023	3095	2867	228	4118	0	4118
7	22.51.21	88	74	268	0	292	12	302	1036	3300	3142	158	4336	0	4336
8	22.04.59	78	71	288	0	297	4	278	1016	3620	3395	225	4636	0	4636
9	22.40.59	79	124	293	0	294	13	163	966	3838	3749	89	4804	13	4817
10	15.30.14	87	142	288	0	296	13	158	984	3602	3431	171	4586	0	4586
11	11.14.41	72	148	290	0	280	13	143	946	3317	3211	106	4263	0	4263
12	15.26.07	36	145	283	0	285	12	151	912	3433	3197	236	4345	0	4345
13	22.44.09	45	150	272	0	288	9	155	919	3342	3269	73	4261	0	4261
14	00.01.23	43	149	270	0	283	14	155	914	3209	2842	367	4123	0	4123
15	22.56.28	32	144	294	0	266	15	302	1053	3444	3308	136	4497	0	4497
16	14.21.28	0	144	286	0	294	15	295	1034	3551	3298	253	4585	0	4585
17	22.56.28	82	144	292	0	303	16	308	1145	3606	3419	187	4751	0	4751
18	22.53.58	82	149	265	0	289	12	312	1109	3773	3612	161	4882	0	4882
19	22.42.41	72	144	291	0	271	12	313	1103	3755	3678	77	4858	0	4858
20	22.54.28	39	108	272	0	296	11	307	1033	3647	3575	72	4680	0	4680
21	00.01.03	40	108	272	0	295	11	307	1033	3528	3376	152	4561	0	4561
22	22.42.51	38	109	263	0	261	13	313	997	3784	3562	222	4781	0	4781
23	00.00.06	74	110	258	0	263	12	316	1033	3538	3329	209	4571	0	4571
24	23.00.39	86	107	259	0	441	14	334	1241	3337	3173	164	4578	2	4580
25	22.53.36	84	108	288	0	277	16	316	1089	3430	3402	28	4519	0	4519
26	19.03.44	34	107	292	0	277	14	317	1041	3469	3385	84	4510	12	4522
27	22.55.56	42	107	268	0	293	17	310	1037	3337	3421	-84	4374	0	4374
28	23.28.54	40	108	267	0	279	15	323	1032	3354	3361	-7	4386	0	4386
29	23.06.15	37	104	296	0	303	13	314	1067	3438	3406	32	4505	42	4547
30	22:57:27	38	105	293	0	304	16	342	1098	3432	3403	29	4530	0	4530

## SOURCEWISE SCHEDULED DRAWL FROM NORTHERN GRID AS WELL AS AVAILABILITY WITHIN DELHI FOR SEPTEMBER 2014

### A) AVAILABILITY FROM GENCO AND PRAGATI STNs. (all fig in MUs)

A (i) RPH	53.273
(ii) GT+STG	81.018
(iii) PRAGATI	207.342
(iv) RITHALA	0.00
(v) BAWANA CCGT	210.497
(vi) Timarpur ó Okhla	10.733
<b>TOTAL</b>	<b>562.863</b>
<b>B) AVAILABILITY FROM BTPS</b>	<b>210.525</b>
<b>C) AUXILIARY CONSUMPTION OF GENERATING STNs. EXCLUDING BTPS</b>	<b>26.858</b>
<b>D) NET GENERATION AVAILABLE WITHIN DELHI(A+B-C)</b>	<b>746.530</b>

### B) SOURCE WISE SCHEDULED DRAWL FROM THE NORTHERN GRID

NAME OF THE STATION	AVAILABILITY AT POWER PLANT	AVAILABILITY AT DELHI PERIPHERY	ALLOCATION MADE BY NRLDC AT POWER PLANT	ALLOCATION MADE BY NRLDC AT DELHI PERIPHERY
B/SUIL	5.348	5.194	5.348	5.194
SALAL	38.333	37.201	38.333	37.201
SASAN	144.221	140.018	144.210	140.008
TANKAPUR	7.342	7.127	7.342	7.127
CHAMERA	18.652	18.108	18.652	18.108
CHAMERA -II	21.234	20.614	21.234	20.614
CHAMERA -III	14.595	14.169	14.595	14.169
DHAULIGANGA	17.482	16.971	17.482	16.971
SEWA -2	7.215	7.004	7.215	7.004
URI	28.911	28.063	28.911	28.063
URI-II	17.236	16.729	17.236	16.729
KOTESHWAR	5.462	5.303	5.462	5.303
PARBATI3	7.703	7.478	7.703	7.478
MUNDRA_UMPP	0.000	0.000	0.000	0.000
ANTA (GAS)	13.524	13.126	10.847	10.528
ANTA (RLNG)	15.149	14.705	0.715	0.695
ANTA (LIQUID)	0.000	0.000	0.000	0.000
DADRI (GAS)	20.399	19.798	13.612	13.211
DADRI (RLNG)	40.138	38.964	1.511	1.469
DADRI (LIQUID)	0.000	0.000	0.000	0.000
AURAIYA (GAS)	14.264	13.845	10.033	9.738
AURAIYA (RLNG)	27.023	26.235	1.376	1.337
AURAIYA (LIQUID)	0.130	0.126	0.000	0.000
SINGRAULI	73.949	71.782	73.941	71.775
RIHAND -I	29.212	28.352	28.313	27.480
RIHAND -II	81.988	79.586	80.382	78.028
RIHAND -III	74.184	72.017	72.453	70.338
UNCHAHAHAR-I	7.389	7.172	6.821	6.620
UNCHAHAHAR-II	28.392	27.563	26.108	25.345
UNCHAHAHAR-III	19.404	18.835	17.972	17.445
DADRI (TH)	396.665	385.109	325.963	316.454
DADRI (TH) STAGE-II	399.939	388.269	352.622	342.322
NAPP	21.055	20.438	21.055	20.438
RAPP 'B'	0.000	0.000	0.000	0.000
RAPP 'C'	16.922	16.432	16.922	16.432
NATHPA JHAKRI	74.372	72.200	55.481	53.860
DULASTI	34.807	33.788	34.807	33.788
TEHRI	16.295	15.818	16.295	15.818
JHAJJAR	0.000	0.000	0.000	0.000
KHELGAON	31.688	30.759	29.228	28.371
KHELGAON-II	71.455	69.358	68.749	66.731
FARAKA	10.153	9.855	9.573	9.292
TALA	22.798	22.130	22.798	22.130
TALCHER	0.000	0.000	0.000	0.000
DVC	152.065	150.358	150.358	145.955



NAME OF THE STATION	AVAILABILITY AT POWER PLANT	AVAILABILITY AT DELHI PERIPHERY	ALLOCATION MADE BY NRLDC AT POWER PLANT	ALLOCATION MADE BY NRLDC AT DELHI PERIPHERY
UTTAR PRADESH	65.250	64.248	64.248	62.367
ANDHRA	0.035	0.034	0.034	0.033
MAHARASHTRA	0.279	0.274	0.274	0.266
DVC CTPS (BRPL)	0.000	0.000	0.000	0.000
DVC CTPS (BYPL)	0.000	0.000	0.000	0.000
DVC CTPS (NDPL)	0.000	0.000	0.000	0.000
METHON POWER(NDPL)LT-06	93.772	92.704	92.704	89.964
DVC MEJIA (LT-08)(BYPL)	0.000	0.000	0.000	0.000
URS	0.254	0.246	0.254	0.246
JAMMU & KASHMIR	68.637	67.788	67.788	65.799
HIMACHAL PRADESH	36.978	36.520	36.520	35.450
MEGHALAYA	15.968	15.745	15.745	15.283
MADHYA PRADESH	67.190	65.944	65.944	63.997
CHATTISHGARH	0.016	0.015	0.015	0.015
DVC (FOR NDPL) LT-09	0.000	0.000	0.000	0.000
HARYANA (LT-05)	45.016	44.453	44.453	43.138
JHARKHAND	14.728	14.606	14.606	14.178
ORISSA	0.196	0.193	0.193	0.187
TO HARYANA	-0.281	-0.285	-0.285	-0.293
TO BIHAR	-0.146	-0.147	-0.147	-0.152
TO UTTAR PRADESH	-13.649	-13.860	-13.860	-14.275
TO JAMMU & KASHMIR	0.000	0.000	0.000	0.000
TO KERALA	-0.252	-0.257	-0.257	-0.265
POWER EXCHANGE(IEEX)	89.055	86.415	89.055	86.415
TO POWER EXCHANGE (IEEX)	-72.595	-74.725	-72.595	-74.725
POWER EXCHANGE(PX)	0.000	0.000	0.000	0.000
TO POWER EXCHANGE (PX)	-11.423	-11.767	-11.423	-11.767
TO SHARE PROJECT (HARYANA)	-20.654	-21.278	-20.654	-21.278
TO SHARE PROJECT (PUNJAB)	-17.314	-17.838	-17.314	-17.838
<b>TOTAL</b>	<b>2388.152</b>	<b>2319.628</b>	<b>2136.959</b>	<b>2066.313</b>

### C) AGENCY WISE BREAKUP OF ENERGY SCHEDULED DRAW FROM THE GRID

NAME OF THE STATION	AVAILABILITY AT POWER PLANT	AVAILABILITY AT DELHI PERIPHERY	ALLOCATION MADE BY NRLDC AT POWER PLANT	ALLOCATION MADE BY NRLDC AT DELHI PERIPHERY
NTPC - NR	1241.749	1205.486	1022.671	992.785
NTPC - ER	113.297	109.973	107.551	104.394
NHPC	218.858	212.444	218.858	212.444
NPC	37.977	36.871	37.977	36.871
SASAN	144.221	140.018	144.210	140.008
KOTESHWAR	5.462	5.303	5.462	5.303
MUNDRA UMPP	0.000	0.000	0.000	0.000
NATHPA JHAKRI	74.372	72.200	55.481	53.860
TEHRI	16.295	15.818	16.295	15.818
TALA	22.798	22.130	22.798	22.130
JHAJJAR	0.000	0.000	0.000	0.000
TALCHER	0.000	0.000	0.000	0.000
DVC	152.065	150.358	150.358	145.955
UTTAR PRADESH	65.250	64.248	64.248	62.367
ANDHRA	0.035	0.034	0.034	0.033
MAHARASHTRA	0.279	0.274	0.274	0.266
DVC CTPS (BRPL)	0.000	0.000	0.000	0.000
DVC CTPS (BYPL)	0.000	0.000	0.000	0.000
DVC CTPS (NDPL)	0.000	0.000	0.000	0.000
METHON POWER (NDPL)-LT-06	93.772	92.704	92.704	89.964
DVC MEJIA (LT-08)(BYPL)	0.000	0.000	0.000	0.000
URS	0.254	0.246	0.254	0.246
JAMMU & KASHMIR	68.637	67.788	67.788	65.799
HIMACHAL PRADESH	36.978	36.520	36.520	35.450
MEGHALAYA	15.968	15.745	15.745	15.283
MADHYA PRADESH(WR)	67.190	65.944	65.944	63.997
CHATTISHGARH	0.016	0.015	0.015	0.015
DVC (FOR NDPL) LT-09	0.000	0.000	0.000	0.000
HARYANA (LT -05)	45.016	44.453	44.453	43.138
JHARKHAND	14.728	14.606	14.606	14.178
ORISSA	0.196	0.193	0.193	0.187
POWER EXCHANGE(IEEX)	89.055	86.415	89.055	86.415
POWER EXCHANGE(PX)	0.000	0.000	0.000	0.000
<b>TOTAL</b>	<b>2524.466</b>	<b>2459.786</b>	<b>2273.495</b>	<b>2206.907</b>

## D) AGENCY WISE BREAKUP OF ENERGY SCHEDULED BY NRLDC FOR EXPORT TO OTHER UTILITIES FROM DTL

NAME OF THE STATION	AVAILABILITY AT POWER PLANT	AVAILABILITY AT PERIPHERY	ALLOCATION MADE BY NRLDC AT POWER PLANT	ALLOCATION MADE BY NRLDC AT POWER PERIPHERY
TO HARYANA	-0.281	-0.285	-0.285	-0.293
TO BIHAR	-0.146	-0.147	-0.147	-0.152
TO UTTAR PRADESH	-13.649	-13.860	-13.860	-14.275
TO JAMMU & KASHMIR	0.000	0.000	0.000	0.000
TO ANDHRA	0.000	0.000	0.000	0.000
TO KERALA	-0.252	-0.257	-0.257	-0.265
TO MADHYA PRADESH	0.000	0.000	0.000	0.000
TO NEPAL	0.000	0.000	0.000	0.000
TO RAJASTHAN	0.000	0.000	0.000	0.000
TO MAHARASHTRA	0.000	0.000	0.000	0.000
TO UTTRANCHAL	0.000	0.000	0.000	0.000
TO HIMACHAL PRADESH	0.000	0.000	0.000	0.000
TO WEST BENGAL	0.000	0.000	0.000	0.000
TO POWER EXCHANGE (IEX)	-72.595	-74.725	-72.595	-74.725
TO POWER EXCHANGE (PX)	-11.423	-11.767	-11.423	-11.767
TO SHARE PROJECT (HARYANA)	-20.654	-21.278	-20.654	-21.278
TO SHARE PROJECT (PUNJAB)	-17.314	-17.838	-17.314	-17.838
<b>TOTAL</b>	<b>-136.314</b>	<b>-140.158</b>	<b>-136.537</b>	<b>-140.593</b>
<b>TOTAL SCHEDULED DRAWAL FROM THE GRID</b>	<b>2388.152</b>	<b>2319.628</b>	<b>2136.959</b>	<b>2066.313</b>
TOTAL CONSUMPTION INCLUDING AUX. OF GENERATING STNs. EXCLUDING BTPS				2485.741
NET CONSUMPTION				<b>2818.883</b>
AVAILABILITY WITHIN DELHI				746.530
ACTUAL DRAWAL FROM THE GRID				2072.353
OVER DRAWAL(+)/UNDER DRAWAL(-) FROM THE GRID ON THE BASIS OF SCHEDULED ALLOCATION MADE BY NRLDC TO DELHI AT PERIPHERY				6.040
LOAD SHEDDING				7.504
UNRESTRICTED DEMAND (GROSS)				2853.245
UNRESTRICTED DEMAND (NET)				2826.387
MAX. NET CONSUMPTION				102.341 ON 18.09.2014
MAX. LOAD SHEDDING				355MW ON 09.09.2014 AT 19.16HRS.
<b>PEAK LOAD</b>	Peak Demand during the month			SCHEDDING AT PEAK TIME
DAY PEAK	4819MW AT 15.30HRS ON 18.09.2014			0 MW
EVENING PEAK	4882MW AT 22.53.58HRS ON 18.09.2014			0 MW
P.L.F. OF GENCO AND PRAGATI STNs.	RPH			54.81%
	GT			41.68%
	PRAGATI			87.27%
	RITHALA			0.00%
	BAWANA			21.32%
	Timarpur Okhla			93.17%

DATE	No. of Under Freq. Relay Operated	Shedding due to under frequency relay operation in MUs					Shedding due to Grid Restrictions (Over drawl / low freq.)			
		BSES		NDPL	NDMC	TOTAL	BSES		NDPL	NDMC
		BYPL	BRPL				BYPL	BRPL		
1	2	3	4	5	6	7=3 to 6	8	9	10	11
01-Sep.14	0	0.000	0.000	0.000	0.000	0.000	0.000	0.016	0.000	0.000
02-Sep.14	0	0.000	0.000	0.000	0.000	0.000	0.000	0.074	0.000	0.000
03-Sep.14	0	0.000	0.000	0.000	0.000	0.000	0.238	0.215	0.022	0.000
04-Sep.14	0	0.000	0.000	0.000	0.000	0.000	0.000	0.000	0.000	0.000
05-Sep.14	0	0.000	0.000	0.000	0.000	0.000	0.000	0.000	0.020	0.000
06-Sep.14	0	0.000	0.000	0.000	0.000	0.000	0.016	0.000	0.005	0.000
07-Sep.14	0	0.000	0.000	0.000	0.000	0.000	0.000	0.062	0.010	0.000
08-Sep.14	0	0.000	0.000	0.000	0.000	0.000	0.028	0.349	0.000	0.000
09-Sep.14	0	0.000	0.000	0.000	0.000	0.000	0.022	0.723	0.060	0.000
10-Sep.14	0	0.000	0.000	0.000	0.000	0.000	0.223	0.106	0.000	0.000
11-Sep.14	0	0.000	0.000	0.000	0.000	0.000	0.050	0.028	0.000	0.000
12-Sep.14	0	0.000	0.000	0.000	0.000	0.000	0.129	0.573	0.031	0.000
13-Sep.14	0	0.000	0.000	0.000	0.000	0.000	0.000	0.007	0.000	0.000
14-Sep.14	0	0.000	0.000	0.000	0.000	0.000	0.072	0.000	0.000	0.000
15-Sep.14	0	0.000	0.000	0.000	0.000	0.000	0.037	0.044	0.030	0.000
16-Sep.14	0	0.000	0.000	0.000	0.000	0.000	0.139	0.620	0.000	0.000
17-Sep.14	0	0.000	0.000	0.000	0.000	0.000	0.006	0.052	0.000	0.000
18-Sep.14	0	0.000	0.000	0.000	0.000	0.000	0.000	0.005	0.013	0.000
19-Sep.14	0	0.000	0.000	0.000	0.000	0.000	0.033	0.017	0.000	0.000
20-Sep.14	0	0.000	0.000	0.000	0.000	0.000	0.011	0.021	0.000	0.000
21-Sep.14	0	0.000	0.000	0.000	0.000	0.000	0.000	0.000	0.000	0.000
22-Sep.14	0	0.000	0.000	0.000	0.000	0.000	0.000	0.000	0.012	0.000
23-Sep.14	0	0.000	0.000	0.000	0.000	0.000	0.024	0.034	0.062	0.000
24-Sep.14	0	0.000	0.000	0.000	0.000	0.000	0.033	0.000	0.000	0.000
25-Sep.14	0	0.000	0.000	0.000	0.000	0.000	0.000	0.000	0.000	0.000
26-Sep.14	0	0.000	0.000	0.000	0.000	0.000	0.153	0.119	0.041	0.000
27-Sep.14	0	0.000	0.000	0.000	0.000	0.000	0.000	0.000	0.013	0.000
28-Sep.14	0	0.000	0.000	0.000	0.000	0.000	0.000	0.000	0.000	0.000
29-Sep.14	0	0.000	0.000	0.000	0.000	0.000	0.000	0.412	0.009	0.000
30-Sep.14	0	0.000	0.000	0.000	0.000	0.000	0.000	0.107	0.000	0.000
<b>TOTAL</b>	<b>0</b>	<b>0.000</b>	<b>0.000</b>	<b>0.000</b>	<b>0.000</b>	<b>0.000</b>	<b>1.214</b>	<b>3.584</b>	<b>0.328</b>	<b>0.000</b>

Date	Shedding due to Transmission/Grid Constraints in Central Sector Stations / TTC / ATC VOILATION				TOTAL 16=8to15	TOTAL SHEDDING DUE TO GRID RESTRICTIONS 17=16+7	Due to T&D Constraints				
	BSES		NDPL	NDMC			DTL				
	BYPL	BRPL					BSES		NDPL	NDMC	MES
			12	13			18	19			
01-Sep.14	0.000	0.000	0.000	0.000	0.016	0.016	0.003	0.000	0.000	0.000	0.000
02-Sep.14	0.000	0.000	0.000	0.000	0.074	0.074	0.011	0.000	0.000	0.000	0.000
03-Sep.14	0.000	0.000	0.000	0.000	0.475	0.475	0.025	0.000	0.000	0.000	0.000
04-Sep.14	0.000	0.000	0.000	0.000	0.000	0.000	0.000	0.032	0.000	0.000	0.000
05-Sep.14	0.000	0.000	0.000	0.000	0.020	0.020	0.000	0.000	0.008	0.000	0.000
06-Sep.14	0.000	0.000	0.000	0.000	0.021	0.021	0.007	0.000	0.000	0.000	0.000
07-Sep.14	0.000	0.000	0.000	0.000	0.072	0.072	0.011	0.007	0.041	0.000	0.000
08-Sep.14	0.000	0.000	0.000	0.000	0.377	0.377	0.000	0.000	0.014	0.000	0.000
09-Sep.14	0.000	0.000	0.000	0.000	0.805	0.805	0.000	0.000	0.000	0.000	0.000
10-Sep.14	0.000	0.000	0.000	0.000	0.329	0.329	0.000	0.000	0.002	0.000	0.000
11-Sep.14	0.000	0.000	0.000	0.000	0.078	0.078	0.000	0.000	0.008	0.000	0.000
12-Sep.14	0.000	0.000	0.000	0.000	0.733	0.733	0.000	0.000	0.000	0.000	0.000
13-Sep.14	0.000	0.000	0.000	0.000	0.007	0.007	0.000	0.000	0.015	0.000	0.000
14-Sep.14	0.000	0.000	0.000	0.000	0.072	0.072	0.012	0.000	0.000	0.000	0.000
15-Sep.14	0.000	0.000	0.000	0.000	0.111	0.111	0.030	0.011	0.000	0.000	0.000
16-Sep.14	0.000	0.000	0.000	0.000	0.759	0.759	0.024	0.031	0.000	0.000	0.000
17-Sep.14	0.000	0.000	0.000	0.000	0.058	0.058	0.000	0.000	0.067	0.000	0.000
18-Sep.14	0.000	0.000	0.000	0.000	0.018	0.018	0.000	0.000	0.016	0.000	0.000
19-Sep.14	0.000	0.000	0.000	0.000	0.050	0.050	0.000	0.000	0.000	0.000	0.000
20-Sep.14	0.000	0.000	0.000	0.000	0.032	0.032	0.000	0.000	0.000	0.000	0.000
21-Sep.14	0.000	0.000	0.000	0.000	0.000	0.000	0.000	0.020	0.000	0.000	0.000
22-Sep.14	0.000	0.000	0.000	0.000	0.012	0.012	0.000	0.005	0.000	0.000	0.000
23-Sep.14	0.000	0.000	0.000	0.000	0.120	0.120	0.000	0.000	0.000	0.000	0.000
24-Sep.14	0.000	0.000	0.000	0.000	0.033	0.033	0.000	0.000	0.000	0.000	0.000
25-Sep.14	0.000	0.000	0.000	0.000	0.000	0.000	0.000	0.004	0.007	0.000	0.000
26-Sep.14	0.000	0.000	0.000	0.000	0.313	0.313	0.022	0.005	0.000	0.000	0.000
27-Sep.14	0.000	0.000	0.000	0.000	0.013	0.013	0.000	0.000	0.000	0.000	0.000
28-Sep.14	0.000	0.000	0.000	0.000	0.000	0.000	0.076	0.011	0.000	0.000	0.000
29-Sep.14	0.000	0.000	0.000	0.000	0.421	0.421	0.000	0.015	0.030	0.000	0.000
30-Sep.14	0.000	0.000	0.000	0.000	0.107	0.107	0.000	0.054	0.003	0.000	0.000
<b>TOTAL</b>	<b>0.000</b>	<b>0.000</b>	<b>0.000</b>	<b>0.000</b>	<b>5.126</b>	<b>5.126</b>	<b>0.221</b>	<b>0.195</b>	<b>0.211</b>	<b>0.000</b>	<b>0.000</b>

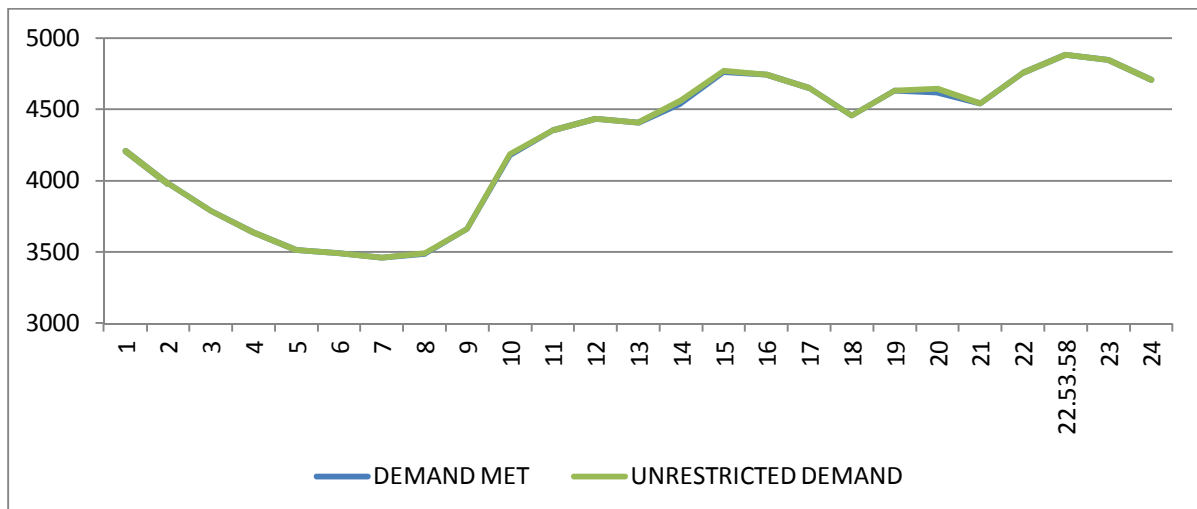
DATE	DUE TO T&D CONSTRAINTS				OTHER AGENCIES LIKE GENCO, BBMB, BTPS ETC.	THEFT PRONE SHEDDING			TOTAL SHEDDING DUE TO T&D CONSTS. & THEFT PRONE	GRAND TOTAL
	DISCOMS					BSES		NDPL		
	BSES		NDPL	NDMC		BSES				
	BYPL	BRPL				BYPL	BRPL			
1	23	24	25		26	27	28	29	30=18 to29	31=30+17
01-Sep.14	0.000	0.003	0.000	0.000	0.000	0.000	0.000	0.001	0.007	0.023
02-Sep.14	0.004	0.003	0.001	0.000	0.000	0.000	0.000	0.023	0.042	0.116
03-Sep.14	0.000	0.000	0.000	0.000	0.000	0.000	0.000	0.025	0.050	0.525
04-Sep.14	0.072	0.000	0.003	0.000	0.000	0.000	0.000	0.008	0.115	0.115
05-Sep.14	0.011	0.032	0.005	0.000	0.000	0.000	0.000	0.006	0.062	0.082
06-Sep.14	0.009	0.012	0.008	0.000	0.000	0.000	0.000	0.020	0.056	0.077
07-Sep.14	0.031	0.002	0.001	0.000	0.000	0.000	0.000	0.001	0.094	0.166
08-Sep.14	0.024	0.012	0.000	0.000	0.000	0.000	0.000	0.015	0.065	0.442
09-Sep.14	0.000	0.019	0.005	0.000	0.000	0.000	0.000	0.031	0.055	0.860
10-Sep.14	0.042	0.058	0.000	0.000	0.000	0.000	0.000	0.018	0.120	0.449
11-Sep.14	0.007	0.000	0.000	0.000	0.000	0.000	0.000	0.013	0.028	0.106
12-Sep.14	0.000	0.000	0.000	0.000	0.000	0.000	0.000	0.001	0.001	0.734
13-Sep.14	0.000	0.004	0.001	0.000	0.000	0.000	0.000	0.000	0.020	0.027
14-Sep.14	0.000	0.000	0.0001	0.000	0.000	0.000	0.000	0.000	0.012	0.084
15-Sep.14	0.000	0.000	0.000	0.000	0.000	0.000	0.000	0.009	0.050	0.161
16-Sep.14	0.000	0.012	0.000	0.000	0.000	0.000	0.000	0.036	0.103	0.862
17-Sep.14	0.000	0.000	0.011	0.000	0.000	0.000	0.000	0.006	0.084	0.142
18-Sep.14	0.000	0.020	0.000	0.000	0.000	0.000	0.000	0.028	0.064	0.082
19-Sep.14	0.000	0.014	0.074	0.000	0.000	0.000	0.000	0.023	0.111	0.161
20-Sep.14	0.000	0.000	0.003	0.000	0.000	0.000	0.000	0.000	0.003	0.035
21-Sep.14	0.004	0.097	0.000	0.000	0.000	0.000	0.000	0.021	0.142	0.142
22-Sep.14	0.000	0.000	0.003	0.000	0.000	0.000	0.000	0.017	0.025	0.037
23-Sep.14	0.007	0.191	0.004	0.000	0.000	0.000	0.000	0.037	0.239	0.359
24-Sep.14	0.000	0.380	0.011	0.000	0.000	0.000	0.000	0.001	0.392	0.425
25-Sep.14	0.000	0.032	0.000	0.000	0.000	0.000	0.000	0.011	0.054	0.054
26-Sep.14	0.000	0.031	0.003	0.000	0.000	0.000	0.000	0.012	0.073	0.386
27-Sep.14	0.000	0.008	0.005	0.000	0.011	0.000	0.000	0.017	0.041	0.054
28-Sep.14	0.000	0.000	0.000	0.000	0.000	0.000	0.000	0.024	0.111	0.111
29-Sep.14	0.000	0.000	0.000	0.000	0.000	0.000	0.000	0.026	0.071	0.492
30-Sep.14	0.011	0.000	0.002	0.000	0.000	0.000	0.000	0.018	0.088	0.195
<b>TOTAL</b>	<b>0.222</b>	<b>0.930</b>	<b>0.140</b>	<b>0.000</b>	<b>0.011</b>	<b>0.000</b>	<b>0.000</b>	<b>0.448</b>	<b>2.378</b>	<b>7.504</b>

DATE	(NET CONS.)	MAXI. DEMAND MET DURING THE DAY	TIME OF OCCURRENCE OF MAX DEMAND	SHEDDING AT THIS TIME	UN-RESTRICTED DEMAND	MAXIMUM UN-RESTRICTED DEMAND DURING THE DAY	TIME OF MAX. UN-REST. DEMAND	DEMAND AT THAT TIME	SHEDDING AT THAT TIME
	In Mus.	IN MW	IN HRS.	IN MW	IN MW	IN MW	HRS.	IN MW	IN MW
<b>1</b>	<b>32</b>	<b>33</b>	<b>34</b>	<b>35</b>	<b>36=33+35</b>	<b>37=39+40</b>	<b>38</b>	<b>39</b>	<b>40</b>
01-Sep.14	90.715	4471	16:00:11	0	4471	4471	16:00:11	4471	0
02-Sep.14	94.264	4432	15:17:20	0	4432	4432	15:17:20	4432	0
03-Sep.14	92.707	4413	15:10:15	0	4413	4413	15:10:15	4413	0
04-Sep.14	90.948	4347	15:07:34	0	4347	4347	15:07:34	4347	0
05-Sep.14	84.998	4294	11:26:56	2	4296	4296	11:26:56	4294	2
06-Sep.14	82.328	4118	19:37:28	0	4118	4118	19:37:28	4118	0
07-Sep.14	85.835	4336	22:55:21	0	4336	4336	22:55:21	4336	0
08-Sep.14	96.508	4636	22:04:59	0	4636	4676	23:00	4529	147
09-Sep.14	100.348	4804	22:40:59	13	4817	4817	22:40:59	4804	13
10-Sep.14	99.590	4586	15:30:14	0	4586	4607	12:00	4470	137
11-Sep.14	92.912	4263	11:14:41	0	4263	4263	11:14:41	4263	0
12-Sep.14	89.100	4345	15:26:07	0	4345	4353	19:30	4127	226
13-Sep.14	89.187	4261	22:44:09	0	4261	4261	22:44:09	4261	0
14-Sep.14	86.430	4123	00:01:23	0	4123	4123	00:01:23	4123	0
15-Sep.14	90.266	4497	22:56:28	0	4497	4497	22:56:28	4497	0
16-Sep.14	97.494	4585	14:21:28	0	4585	4688	22:30	4460	228
17-Sep.14	99.883	4751	22:56:28	0	4751	4751	22:56:28	4751	0
18-Sep.14	102.341	4882	22:53:58	0	4882	4882	22:53:58	4882	0
19-Sep.14	101.185	4858	22:42:41	0	4858	4858	22:42:41	4858	0
20-Sep.14	100.475	4680	22:54:28	0	4680	4680	22:54:28	4680	0
21-Sep.14	91.563	4561	00:01:03	0	4561	4561	00:01:03	4561	0
22-Sep.14	97.855	4781	22:42:51	0	4781	4781	22:42:51	4781	0
23-Sep.14	96.312	4571	00:00:06	0	4571	4571	00:00:06	4571	0
24-Sep.14	96.714	4578	23:00:39	2	4580	4580	23:00:39	4578	2
25-Sep.14	96.978	4519	22:53:36	0	4519	4519	22:53:36	4519	0
26-Sep.14	96.095	4510	19:03:44	12	4522	4522	19:03:44	4510	12
27-Sep.14	94.267	4374	22:55:56	0	4374	4374	22:55:56	4374	0
28-Sep.14	88.703	4386	23:28:54	0	4386	4386	23:28:54	4386	0
29-Sep.14	95.872	4505	23:06:15	42	4547	4547	23:06:15	4505	42
30-Sep.14	97.010	4530	22:57:27	0	4530	4530	22:57:27	4530	0
<b>TOTAL</b>	<b>2818.883</b>	<b>4882</b> <b>18.09.2014</b>	<b>22:53:58</b>	<b>0</b>	<b>4882</b> <b>18.09.2014</b>	<b>4882</b>	<b>22:53:58</b>	<b>4882</b>	<b>0</b>

**LOAD PATTERN OF DELHI ON THE DAY OF PEAK DEMAND MET DURING SEPTEMBER 2014 ON 18.09.2014- 4882MW AT 22.53.58HRS.**

All figures in MW

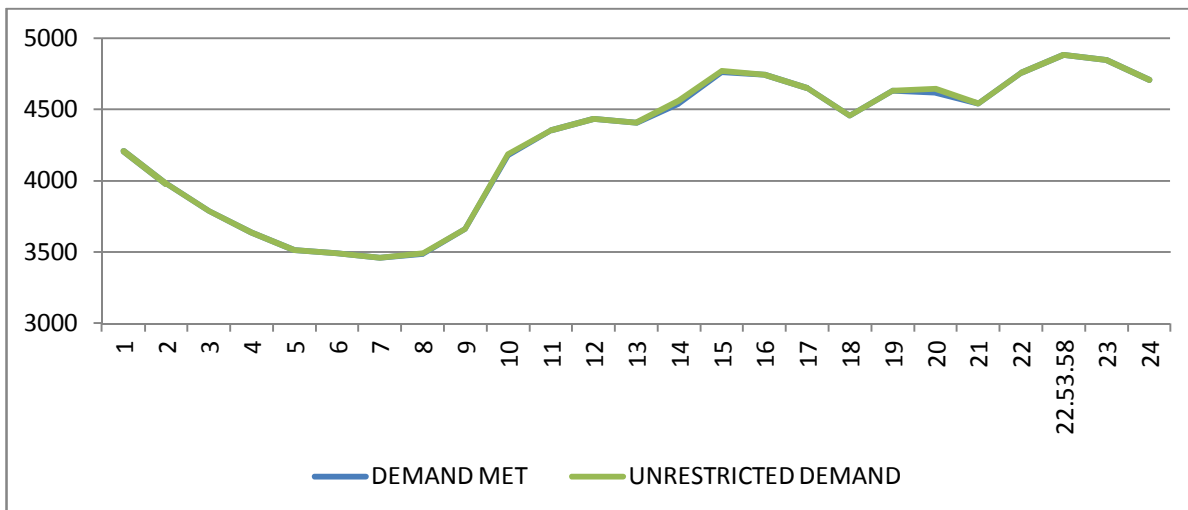
Hrs.	Demand	Load Shedding	Un-Restricted Demand
1	4209	0	4209
2	3980	0	3980
3	3788	0	3788
4	3634	0	3634
5	3514	0	3514
6	3492	0	3492
7	3461	0	3461
8	3485	5	3490
9	3660	2	3662
10	4177	9	4186
11	4355	0	4355
12	4434	0	4434
13	4409	0	4409
14	4540	21	4561
15	4762	7	4769
16	4745	0	4745
17	4648	0	4648
18	4457	0	4457
19	4629	0	4629
20	4618	26	4644
21	4541	0	4541
22	4757	0	4757
<b>22.53.58</b>	<b>4882</b>	<b>0</b>	<b>4882</b>
23	4847	0	4847
24	4706	0	4706
<b>Total (IN MUS)</b>	<b>102.341</b>	<b>0.082</b>	<b>102.423</b>



**11 LOAD PATTERN OF DELHI ON THE DAY OF MAXIMUM UN-RESTRICTED DEMAND DURING SEPTEMBER 2014 ON 18.09.2014- 4882MW AT 22.53.58HRS.**

All figures in MW

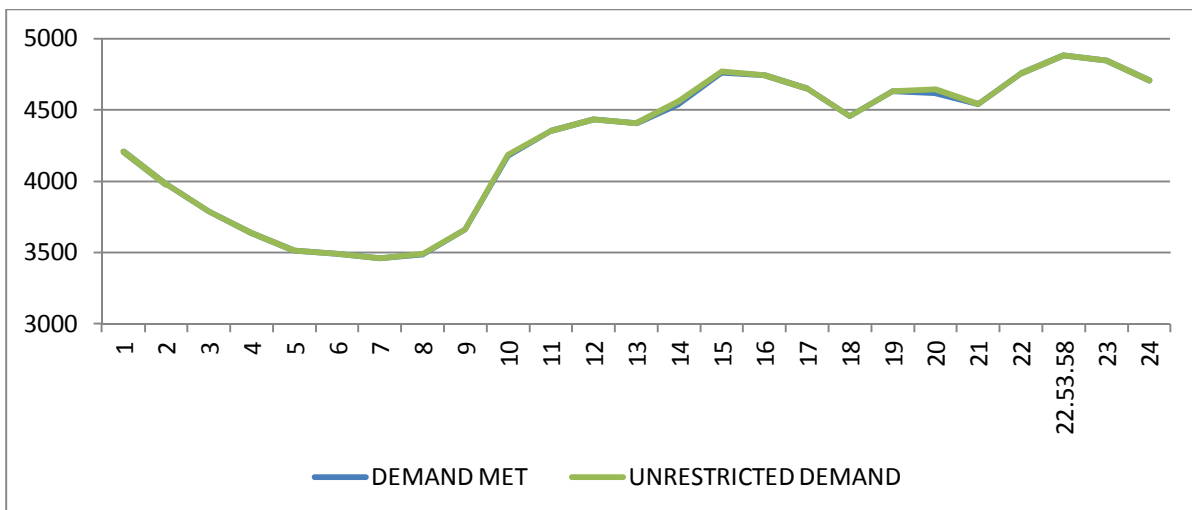
Hrs.	Demand	Load Shedding	Un-Restricted Demand
1	4209	0	4209
2	3980	0	3980
3	3788	0	3788
4	3634	0	3634
5	3514	0	3514
6	3492	0	3492
7	3461	0	3461
8	3485	5	3490
9	3660	2	3662
10	4177	9	4186
11	4355	0	4355
12	4434	0	4434
13	4409	0	4409
14	4540	21	4561
15	4762	7	4769
16	4745	0	4745
17	4648	0	4648
18	4457	0	4457
19	4629	0	4629
20	4618	26	4644
21	4541	0	4541
22	4757	0	4757
22.53.58	4882	0	4882
23	4847	0	4847
24	4706	0	4706
<b>Total (IN MUS)</b>	<b>102.341</b>	<b>0.082</b>	<b>102.423</b>





**12 LOAD PATTERN OF DELHI ON THE DAY OF MAXIMUM ENERGY CONSUMED DURING SEPTEMBER 2014 – 18.09.2014 – 102.341Mus All figures in MW**

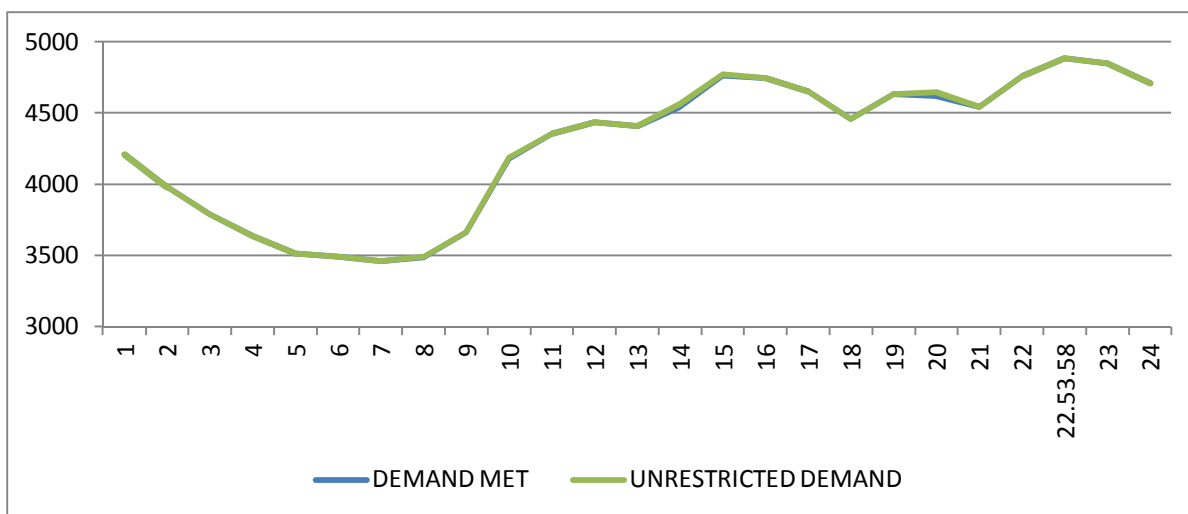
Hrs.	Demand	Load Shedding	Un-Restricted Demand
1	4209	0	4209
2	3980	0	3980
3	3788	0	3788
4	3634	0	3634
5	3514	0	3514
6	3492	0	3492
7	3461	0	3461
8	3485	5	3490
9	3660	2	3662
10	4177	9	4186
11	4355	0	4355
12	4434	0	4434
13	4409	0	4409
14	4540	21	4561
15	4762	7	4769
16	4745	0	4745
17	4648	0	4648
18	4457	0	4457
19	4629	0	4629
20	4618	26	4644
21	4541	0	4541
22	4757	0	4757
22.53.58	4882	0	4882
23	4847	0	4847
24	4706	0	4706
<b>Total (IN MUS)</b>	<b>102.341</b>	<b>0.082</b>	<b>102.423</b>



**13 LOAD PATTERN OF DELHI ON THE DAY OF MAXIMUM UNRESTRICTED ENERGY DEMAND DURING SEPTEMBER 2014 – 18.09.2014 – 102.423 Mus**

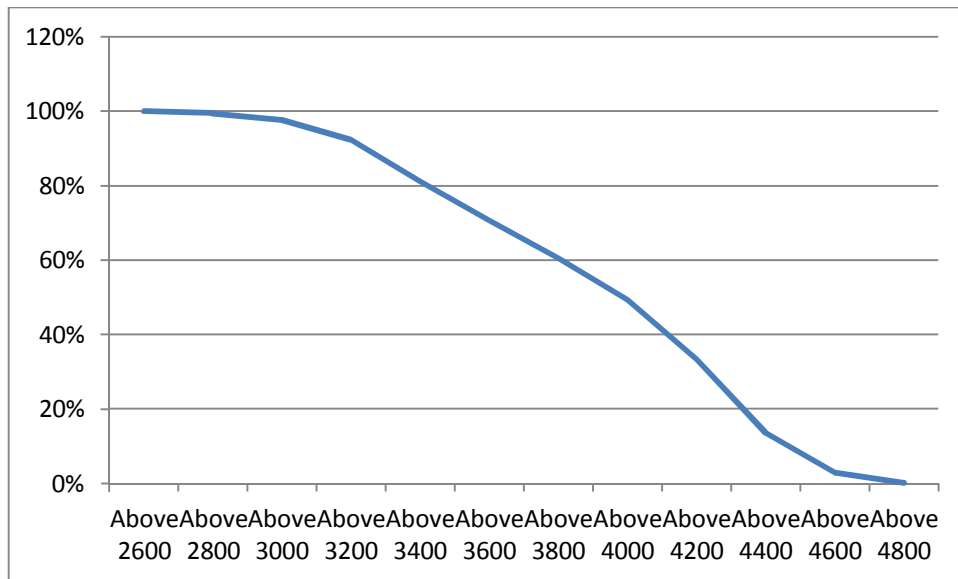
All figures in MW

Hrs.	Demand	Load Shedding	Un-Restricted Demand
1	4209	0	4209
2	3980	0	3980
3	3788	0	3788
4	3634	0	3634
5	3514	0	3514
6	3492	0	3492
7	3461	0	3461
8	3485	5	3490
9	3660	2	3662
10	4177	9	4186
11	4355	0	4355
12	4434	0	4434
13	4409	0	4409
14	4540	21	4561
15	4762	7	4769
16	4745	0	4745
17	4648	0	4648
18	4457	0	4457
19	4629	0	4629
20	4618	26	4644
21	4541	0	4541
22	4757	0	4757
22.53.58	4882	0	4882
23	4847	0	4847
24	4706	0	4706
<b>Total (IN MUS)</b>	<b>102.341</b>	<b>0.082</b>	<b>102.423</b>



14 **LOAD DURATION CURVE FOR SEPTEMBER 2014**

Load in MW	Percentage of Time
Above 2600	100%
Above 2800	99.42%
Above 3000	97.61%
Above 3200	92.34%
Above 3400	81.17%
Above 3600	70.72%
Above 3800	60.59%
Above 4000	49.43%
Above 4200	33.38%
Above 4400	13.68%
Above 4600	2.90%
Above 4800	0.21%



15

**FREQUENCY ANALYSIS FOR THE MONTH OF SEPTEMBER 2014**

Frequency Range in Hz.	Percentage of time

**16 VOLTAGE PROFILE OF 220 KV SUB-STATIONS IN DELHI DURING SEPTEMBER 2014**

**All figures in kV**

Date	NARELA		GAZIPUR	
	Max	Min	Max	Min
01-Sep.14	226.08	214.99	223.76	--
02-Sep.14	222.47	215.64	226.21	211.90
03-Sep.14	226.34	218.60	227.89	215.12
04-Sep.14	227.50	216.28	231.11	--
05-Sep.14	227.63	218.86	233.31	219.89
06-Sep.14	229.95	214.35	232.66	217.57
07-Sep.14	228.28	216.54	230.73	217.83
08-Sep.14	226.34	213.96	228.66	--
09-Sep.14	227.50	214035	--	--
10-Sep.14	224.41	216.54	--	--
11-Sep.14	225.44	217.06	--	--
12-Sep.14	227.24	219.12	225.70	--
13-Sep.14	228.15	207.64	229.44	213.96
14-Sep.14	227.50	217.83	230.08	218.35
15-Sep.14	227.50	217.83	230.08	218.35
16-Sep.14	224.02	212.15	225.70	208.67
17-Sep.14	223.63	209.19	223.76	210.48
18-Sep.14	221.57	210.22	224.92	208.67
19-Sep.14	220.92	209.96	222.09	209.96
20-Sep.14	218.60	209.32	223.12	209.32
21-Sep.14	221.70	213.06	224.79	209.19
22-Sep.14	221.05	212.15	225.31	211.25
23-Sep.14	--	--	--	--
24-Sep.14	223.76	215.12	226.08	210.87
25-Sep.14	221.70	211.15	224.79	213.44
26-Sep.14	224.79	212.15	226.86	210.09
27-Sep.14	221.70	213.06	223.50	212.03
28-Sep.14	221.70	212.15	221.57	212.03
29-Sep.14	221.70	211.77	223.50	212.03
30-Sep.14	221.57	210.87	224.41	212.67

**17 VOLTAGE PROFILE OF 400 KV SUB-STATIONS IN DELHI DURING SEPTEMBER 2014**  
**All figures in kV**

Date	400kV Barnauli Grid Sub-Station				
	Max KV	Max Time	Min KV	Min Time	Average KV
01-Sep.14	413.41	07.59.23	393.47	11.27.36	405.18
02-Sep.14	418.10	06.03.51	398.16	19.09.07	407.90
03-Sep.14	414.58	13.01.16	400.74	19.14.29	408.28
04-Sep.14	418.10	03.02.26	399.57	14.28.07	408.37
05-Sep.14	419.74	03.00.10	403.79	19.20.45	412.63
06-Sep.14	422.55	04.00.59	397.46	19.07.26	410.83
07-Sep.14	419.27	06.06.56	400.74	19.16.48	411.38
08-Sep.14	415.98	06.10.57	399.34	09.42.30	407.19
09-Sep.14	413.64	06.10.57	397.46	22.18.38	403.90
10-Sep.14	417.86	06.03.32	402.85	19.05.57	408.91
11-Sep.14	417.86	03.00.43	401.68	19.12.46	410.25
12-Sep.14	420.67	04.26.59	402.85	11.23.04	411.07
13-Sep.14	419.50	03.00.43	392.30	14.28.44	405.65
14-Sep.14	414.34	17.08.56	396.76	18.58.02	405.19
15-Sep.14	414.34	17.08.56	396.76	18.58.02	405.19
16-Sep.14	406.84	04.00.14	386.67	14.54.30	398.18
17-Sep.14	407.31	06.03.16	388.08	14.26.54	397.71
18-Sep.14	404.49	04.02.49	389.02	19.07.48	397.13
19-Sep.14	406.14	06.01.40	388.78	11.52.21	397.24
20-Sep.14	407.31	18.05.42	386.67	10.23.31	396.98
21-Sep.14	405.67	18.02.04	390.43	00.06.43	397.83
22-Sep.14	405.67	03.59.51	390.19	10.12.13	397.48
23-Sep.14	--	--	--	--	--
24-Sep.14	408.95	06.07.48	391.13	19.18.16	398.55
25-Sep.14	406.14	06.04.57	389.02	11.37.58	396.98
26-Sep.14	409.18	06.02.45	388.55	14.54.48	396.48
27-Sep.14	405.20	01.59.19	390.89	11.56.17	397.45
28-Sep.14	408.01	17.05.05	391.13	11.41.29	398.36
29-Sep.14	402.20	01.59.19	390.89	11.56.17	398.54
30-Sep.14	407.31	05.02.39	389.96	18.38.26	398.48

Date	400kV Bawana Grid Sub-Station				
	Max KV	Max Time	Min KV	Min Time	Average KV
01-Sep.14	--	--	--	--	--
02-Sep.14	--	--	--	--	--
03-Sep.14	--	--	--	--	--
04-Sep.14	--	--	--	--	--
05-Sep.14	--	--	--	--	--
06-Sep.14	--	--	--	--	--
07-Sep.14	--	--	--	--	--
08-Sep.14	--	--	--	--	--
09-Sep.14	--	--	--	--	--
10-Sep.14	--	--	--	--	--
11-Sep.14	--	--	--	--	--
12-Sep.14	--	--	--	--	--
13-Sep.14	--	--	--	--	--
14-Sep.14	--	--	--	--	--
15-Sep.14	--	--	--	--	--
16-Sep.14	--	--	--	--	--
17-Sep.14	--	--	--	--	--
18-Sep.14	--	--	--	--	--
19-Sep.14	--	--	--	--	--
20-Sep.14	--	--	--	--	--
21-Sep.14	408.72	08.49.55	211.51	00.0633	404.85
22-Sep.14	412.23	18.03.45	399.34	09.47.01	405.63
23-Sep.14	--	--	--	--	--
24-Sep.14	413.64	06.10.48	--	--	405.45
25-Sep.14	411.06	06.17.28	397.23	11.37.58	404.26
26-Sep.14	416.69	06.04.25	--	--	405.62
27-Sep.14	412.00	18.03.57	399.34	09.39.57	405.05
28-Sep.14	416.22	18.03.49	398.63	11.41.29	406.64
29-Sep.14	412.23	18.03.04	399.34	09.39.57	407.44
30-Sep.14	414.58	03.00.50	401.45	18.38.36	407.70

## 18 DETAILS OF LUMPED CAPACITORS AT NEAREST 220 KV SUBSTATION

Sl. No	SUB-STATION	INSTALLED CAPACITY			
		66KV	33kV	11kV	TOTAL
<b>1</b>	<b>IP YARD</b>		30		<b>30</b>
1	Kamla Market			16.35	<b>16.35</b>
2	Minto Road				<b>0</b>
3	GB Pant Hosp			15.88	<b>15.88</b>
4	Delhi Gate			10.9	<b>10.9</b>
5	Tilakmarg			5.04	<b>5.04</b>
7	Cannaught Place			10.08	<b>10.08</b>
8	Kilokri		10.08	10.48	<b>20.56</b>
9	NDSE				<b>0</b>
11	Nizamuddin				<b>0</b>
12	Exhibition-I				<b>0</b>
13	Exhibition-II				<b>0</b>
14	Defence Colony				<b>0</b>
15	IG Stadium		10.08	5.45	<b>15.53</b>
16	Lajpat Nagar				<b>0</b>
17	IP Estate			10.9	<b>10.9</b>
	<b>LT BYPL</b>				<b>5.6</b>
		<b>0</b>	<b>50.16</b>	<b>85.08</b>	<b>140.84</b>
<b>2</b>	<b>Electric Lane</b>				
1	Electric Lane			5.04	<b>5.04</b>
2	Scindia House			5.04	<b>5.04</b>
3	Raisina Road			10.08	<b>10.08</b>
4	Raja Bazar			10.08	<b>10.08</b>
	<b>LT NDMC</b>				<b>12</b>
		<b>0</b>	<b>0</b>	<b>30.24</b>	<b>42.24</b>
<b>3</b>	<b>RPH Station</b>		20		<b>20</b>
1	Lahori Gate			10.49	<b>10.49</b>
2	Jama Masjid			10.48	<b>10.48</b>
4	Kamla Market				<b>0</b>
5	Minto Road			10.9	<b>10.9</b>
6	GB Pant Hosp				<b>0</b>
7	IG Stadium				<b>0</b>
	<b>LT BYPL</b>				<b>3</b>
		<b>0</b>	<b>20</b>	<b>31.87</b>	<b>54.87</b>
<b>4</b>	<b>Parkstreet S/stn</b>	20	20		<b>40</b>
1	Shastri Park		10.896	5.45	<b>16.346</b>
2	Faiz Road			18.05	<b>18.05</b>
3	Motia Khan			16.3	<b>16.3</b>
4	Prasad Nagar			16.25	<b>16.25</b>
5	Anand Parbat			10.8	<b>10.8</b>
6	Shankar Road			5.04	<b>5.04</b>
7	Rama Road			0	<b>0</b>
8	Baird Road			10.08	<b>10.08</b>
9	Hanuman Road			5.04	<b>5.04</b>
10	Pusa			5.44	<b>5.44</b>
11	Ridge Valley			0	<b>0</b>
12	B. D. Marg			0	<b>0</b>
13	Nirman Bhawan			5.04	<b>5.04</b>
	<b>LT BYPL</b>			0	<b>30.1</b>
		<b>20.00</b>	<b>30.90</b>	<b>97.49</b>	<b>178.486</b>
<b>5</b>	<b>Naraina S/stn</b>		20	5.04	<b>25.04</b>
1	DMS			10.85	<b>10.85</b>
2	Mayapuri		10.87	10.4	<b>21.27</b>
3	Inderpuri		10	4.8	<b>14.8</b>
4	Rewari line				<b>0</b>
5	Khyber Lane		10.05		<b>10.05</b>
6	Kirbi Place		10.05		<b>10.05</b>
7	Payal			7.2	<b>7.2</b>
8	Saraswati Garden			10.88	<b>10.88</b>
		<b>0</b>	<b>60.97</b>	<b>49.17</b>	<b>110.14</b>



Sl. No	SUB-STATION	INSTALLED CAPACITY			
		66KV	33kV	11kV	TOTAL
<b>6</b>	<b>Mehrauli S/stn</b>	80		5.04	<b>85.04</b>
1	Adchini			14.61	<b>14.61</b>
2	Andheria Bagh			10.85	<b>10.85</b>
3	IIT			10.9	<b>10.9</b>
4	JNU		10.03	10.03	<b>20.06</b>
5	Bijwasan			15.47	<b>15.47</b>
6	DC Saket			9.98	<b>9.98</b>
7	Malviya Nagar				<b>0</b>
8	C Dot			10.48	<b>10.48</b>
9	Vasant kunj B-Blk	21.79		10.9	<b>32.69</b>
10	Vasant kunj C-Blk	20.16		10.48	<b>30.64</b>
11	Palam				<b>0</b>
12	IGNOU			5.04	<b>5.04</b>
13	R. K. Puram-I			10.07	<b>10.07</b>
14	Vasant Vihar			19.25	<b>19.25</b>
15	Pusp Vihar			10.44	<b>10.44</b>
16	Bhikaji Cama Place		10.08	10.07	<b>20.15</b>
	<b>LT BRPL</b>				<b>25</b>
		<b>121.95</b>	<b>20.11</b>	<b>163.61</b>	<b>330.67</b>
<b>7</b>	<b>Vasantkunj S/stn</b>	40		5.04	<b>45.04</b>
1	R. K. Puram-II			10.08	<b>10.08</b>
2	Vasant kunj C-Blk				<b>0</b>
3	Vasant kunj D-Blk			9.63	<b>9.63</b>
4	Ridge Valley				<b>0</b>
	<b>LT BRPL</b>				<b>33.2</b>
		<b>40</b>	<b>0</b>	<b>24.75</b>	<b>97.95</b>
<b>8</b>	<b>Okhla S/stn</b>	60	10	5.04	<b>75.04</b>
1	Balaji			10.8	<b>10.8</b>
2	East of Kailash			15.89	<b>15.89</b>
3	Alaknanda			16.3	<b>16.3</b>
4	Malviya Nagar	21.79		10.85	<b>32.64</b>
5	Masjid Moth			16.3	<b>16.3</b>
6	Nehru Place			21.34	<b>21.34</b>
7	Okhla Ph-I	21.79		16.3	<b>38.09</b>
8	Okhla Ph-II		20.93	15.47	<b>36.4</b>
9	Shivalik			10.8	<b>10.8</b>
10	Batra			15.9	<b>15.9</b>
11	VSNL			10.9	<b>10.9</b>
12	Siri Fort			10.49	<b>10.49</b>
13	Tuglakabad			10.85	<b>10.85</b>
	<b>LT BRPL</b>				<b>59</b>
		<b>103.58</b>	<b>30.93</b>	<b>187.23</b>	<b>380.74</b>
<b>9</b>	<b>Lodhi Road S/stn</b>		20		<b>20</b>
1	Defence Colony		14.85		<b>14.85</b>
2	Hudco		10.9		<b>10.9</b>
3	Lajpat Nagar		10.9		<b>10.9</b>
4	Nizamuddin		10.44		<b>10.44</b>
5	Vidyut Bhawan				<b>0</b>
6	Ex. Gr. II				<b>0</b>
7	IHC				<b>0</b>
	<b>LT BRPL</b>				<b>42</b>
		<b>0</b>	<b>67.09</b>	<b>0</b>	<b>109.09</b>
<b>10</b>	<b>Sarita Vihar S/stn</b>	20		5.04	<b>25.04</b>
1	Sarita Vihar			10.07	<b>10.07</b>
2	MCIE			10.06	<b>10.06</b>
3	Mathura Road	20.16		11.69	<b>31.85</b>
4	Jamia Millia			10.89	<b>10.89</b>
5	Sarai Julena		10.08	16.29	<b>26.37</b>
6	Jasola			5.44	<b>5.44</b>
	<b>LT BRPL</b>				<b>23.6</b>
		<b>40.16</b>	<b>10.08</b>	<b>69.48</b>	<b>143.32</b>

Sl. No	SUB-STATION	INSTALLED CAPACITY			
		66KV	33kV	11kV	TOTAL
<b>11</b>	<b>Wazirabad</b>				
1	Bhagirathi		14.4	10.9	<b>25.3</b>
2	Ghonda	21.79	22.56	15.94	<b>60.29</b>
3	Seelam Pur		10.08	21.39	<b>31.47</b>
4	Dwarkapuri			15.46	<b>15.46</b>
5	Nandnagri	20.16		16.35	<b>36.51</b>
6	Yamuna Vihar			16.2	<b>16.2</b>
7	East of Loni Road			10.8	<b>10.8</b>
8	Shastri Park			10.9	<b>10.9</b>
9	Karawal Nagar			5.4	<b>5.4</b>
10	Sonia Vihar			7.2	<b>7.2</b>
	<b>LT BYPL</b>				<b>10</b>
		<b>41.95</b>	<b>47.04</b>	<b>130.54</b>	<b>229.53</b>
<b>12</b>	<b>Geeta Colony</b>				
1	Geeta Colony				<b>0</b>
2	Kanti Nagar			10.49	<b>10.49</b>
3	Kailash Nagar			10.9	<b>10.9</b>
4	Seelam Pur			15.48	<b>15.48</b>
5	Shakar Pur				<b>0</b>
	<b>LT BYPL</b>				<b>5.8</b>
		<b>0</b>	<b>0</b>	<b>36.87</b>	<b>42.67</b>
<b>13</b>	<b>Gazipur S/stn</b>	40		5.04	<b>45.04</b>
1	Dallupura	28.8		10.9	<b>39.7</b>
2	Vivek Vihar			9.57	<b>9.57</b>
3	GT Road			10.85	<b>10.85</b>
4	Kondli	20.16		10.85	<b>31.01</b>
5	MVR-I			10.9	<b>10.9</b>
6	MVR-II	20.16		10.9	<b>31.06</b>
7	PPG Ind. Area			10.06	<b>10.06</b>
	<b>LT BYPL</b>				<b>20.6</b>
		<b>109.12</b>	<b>0</b>	<b>79.07</b>	<b>208.79</b>
<b>14</b>	<b>Patparganj S/stn</b>	40	20	5.04	<b>65.04</b>
1	GH-I	19.89		10.45	<b>30.34</b>
2	GH-II	20.09		10.9	<b>30.99</b>
3	CBD		10.03	15.48	<b>25.51</b>
4	Guru Angad Nagar			15.49	<b>15.49</b>
5	Karkadooma		10.8	10.44	<b>21.24</b>
6	Preet Vihar			10.07	<b>10.07</b>
7	CBD-II			10.8	<b>10.8</b>
8	Shakarpur			10.8	<b>10.8</b>
9	Jhilmil			10.8	<b>10.8</b>
10	Dilshad Garden	20.16		16.35	<b>36.51</b>
11	Khichipur	21.79		10.49	<b>32.28</b>
12	Mother Dairy				<b>0</b>
13	Scope Building				<b>0</b>
14	Vivek Vihar				<b>0</b>
15	Akhardham			14.6	<b>14.6</b>
	<b>LT BYPL</b>				<b>23.3</b>
		<b>121.93</b>	<b>40.83</b>	<b>151.71</b>	<b>337.77</b>
<b>15</b>	<b>Najafgarh S/stn</b>	60		5.04	<b>65.04</b>
1	A4 Paschim Vihar			10.8	<b>10.8</b>
2	Nangloi	21.73		15.84	<b>37.57</b>
3	Nangloi WW	20.89		10.85	<b>31.74</b>
4	Pankha Road			15.88	<b>15.88</b>
5	Jaffarpur			15.43	<b>15.43</b>
7	Inst. Area Janakpuri			17.6	<b>17.6</b>
8	Paschimpuri		10.05	15.47	<b>25.52</b>
9	Paschim Vihar	41.83		15.43	<b>57.26</b>
10	Mukherjee Park			20.83	<b>20.83</b>
11	Udyog Nagar			10.43	<b>10.43</b>
12	Choukhandi			10.07	<b>10.07</b>
	<b>LT BRPL</b>				<b>27</b>
		<b>144.45</b>	<b>10.05</b>	<b>163.67</b>	<b>345.17</b>

Sl. No	SUB-STATION	INSTALLED CAPACITY			
		66KV	33kV	11kV	TOTAL
<b>16</b>	<b>Pappankalan-I S/stn</b>	20		5.04	<b>25.04</b>
1	Bindapur Grid G-3 PPK	21.73		15.85	<b>37.58</b>
2	Bodella-I	20.1		16.24	<b>36.34</b>
3	Bodella-II	21.73		17.64	<b>39.37</b>
4	DC Janakpuri			10.03	<b>10.03</b>
5	G-2 PPK			10.8	<b>10.8</b>
6	G-5 PPK			15.51	<b>15.51</b>
7	G-6 PPK			5.4	<b>5.4</b>
8	G-15 PPK			10.8	<b>10.8</b>
9	Harinagar	21.18		16.25	<b>37.43</b>
10	Rewari line			5.44	<b>5.44</b>
	<b>LT BRPL</b>				<b>13.5</b>
		<b>104.74</b>	<b>0</b>	<b>129</b>	<b>247.24</b>
<b>17</b>	<b>BBMB Rohtak Road</b>				
1	S.B. Mill			10.07	<b>10.07</b>
2	Rama Road			10.88	<b>10.88</b>
3	Ram Pura			10.48	<b>10.48</b>
4	Rohtak Road			8.04	<b>8.04</b>
5	Vishal			10.4	<b>10.4</b>
6	Tri Nagar			5.44	<b>5.44</b>
7	Madipur			10.43	<b>10.43</b>
8	Sudershan Park			10.08	<b>10.08</b>
9	Kirti Nagar			5.44	<b>5.44</b>
		<b>0</b>	<b>0</b>	<b>81.26</b>	<b>81.26</b>
<b>18</b>	<b>Shalimarbagh S/stn</b>		40	6	<b>46</b>
1	S.G.T. Nagar			5.44	<b>5.44</b>
2	Wazirpur-1			17.18	<b>17.18</b>
3	Wazirpur-2			11.39	<b>11.39</b>
4	Ashok Vihar			5.44	<b>5.44</b>
5	Rani Bagh			10.88	<b>10.88</b>
6	Haiderpur			11.39	<b>11.39</b>
7	SMB FC			5.44	<b>5.44</b>
8	SMB KHOSLA			5.44	<b>5.44</b>
	<b>LT TPDDL</b>				<b>30</b>
		<b>0</b>	<b>40</b>	<b>78.6</b>	<b>148.6</b>
<b>19</b>	<b>Subzimandi S/stn</b>			6	<b>6</b>
1	Shakti Nagar			5.94	<b>5.94</b>
2	Gulabibagh			10.88	<b>10.88</b>
3	Shahzadabagh			13.68	<b>13.68</b>
4	DU			5.44	<b>5.44</b>
5	Tripolia			10.88	<b>10.88</b>
	B. G. Road			5.4	<b>5.4</b>
	<b>LT BYPL</b>				<b>0.9</b>
	<b>LT TPDDL</b>				<b>20</b>
		<b>0</b>	<b>0</b>	<b>58.22</b>	<b>79.12</b>
<b>20</b>	<b>Narela S/stn</b>	40		5.04	<b>45.04</b>
1	A-7 Narela			10.88	<b>10.88</b>
2	AIR Kham pur			6	<b>6</b>
3	Ashok vihar			10.48	<b>10.48</b>
4	Azad Pur			5.44	<b>5.44</b>
5	Tri Nagar			5.44	<b>5.44</b>
6	Badli	20		5.95	<b>25.95</b>
7	DSIDC Narela-1			5.95	<b>5.95</b>
8	GTK			5.44	<b>5.44</b>
9	Jahangirpuri	20	10	0	<b>30</b>
10	Bhalswa			3.6	<b>3.6</b>
	<b>LT TPDDL</b>				<b>10</b>
		<b>80</b>	<b>10</b>	<b>64.22</b>	<b>164.22</b>

Sl. No	SUB-STATION	INSTALLED CAPACITY			
		66KV	33kV	11kV	TOTAL
<b>21</b>	<b>Gopalpur S/stn</b>		30	5.04	<b>35.04</b>
1	Azad Pur			10.88	<b>10.88</b>
2	Hudson Lane			5.44	<b>5.44</b>
3	Wazirabad			2.4	<b>2.4</b>
4	Indra Vihar			5.44	<b>5.44</b>
6	GTK Road			5.94	<b>5.94</b>
7	Jahangirpuri		10	5.95	<b>15.95</b>
8	Civil lines			5.44	<b>5.44</b>
9	Pitam Pura-1			5.44	<b>5.44</b>
10	Pitam Pura-3			5.44	<b>5.44</b>
11	Air Khampur			5.95	<b>5.95</b>
12	SGT Nagar			5.95	<b>5.95</b>
13	Tiggipur			10.88	<b>10.88</b>
	<b>LT TPDDL</b>				<b>29</b>
		<b>0</b>	<b>40</b>	<b>80.19</b>	<b>149.19</b>
<b>22</b>	<b>Rohini S/stn</b>	40		6	<b>46</b>
1	Rohini Sec-22			10.88	<b>10.88</b>
2	Rohini Sec-23	20		5.44	<b>25.44</b>
3	Rohini Sec-24			5.44	<b>5.44</b>
4	Rohini-1			5.44	<b>5.44</b>
5	Rohini-3			5.95	<b>5.95</b>
6	Rohini-4			11.39	<b>11.39</b>
7	Rohini-5			11.39	<b>11.39</b>
8	Rohini-6			5.95	<b>5.95</b>
9	Mangolpuri-1			16.83	<b>16.83</b>
10	Mangolpuri-2	20		5.94	<b>25.94</b>
11	Pitam Pura-1	20		5.04	<b>25.04</b>
12	Pitam Pura-2			10.48	<b>10.48</b>
13	Rohini DC-1			14.4	<b>14.4</b>
	<b>LT TPDDL</b>				<b>30</b>
		<b>100</b>	<b>0</b>	<b>120.57</b>	<b>250.57</b>
<b>23</b>	<b>Kanjhawala S/stn</b>	20		5.04	<b>25.04</b>
1	Bawana Clear Water			10.88	<b>10.88</b>
2	Pooth Khoord			5.44	<b>5.44</b>
		<b>20</b>	<b>0</b>	<b>21.36</b>	<b>41.36</b>
<b>24</b>	<b>BAWANA S/stn</b>				
1	Bawana S/stn No. 6			10.88	<b>10.88</b>
2	Bawana S/stn No. 7				<b>0</b>
		<b>0</b>	<b>0</b>	<b>10.88</b>	<b>10.88</b>
<b>25</b>	<b>Kashmerigate S/stn</b>			5.04	<b>5.04</b>
1	Civil lines			5.44	<b>5.44</b>
2	Town Hall			8.64	<b>8.64</b>
3	Fountain			5.45	<b>5.45</b>
	<b>LT BYPL</b>				<b>2.7</b>
		<b>0</b>	<b>0</b>	<b>24.57</b>	<b>27.27</b>
<b>26</b>	<b>Pappankalan-II</b>				
1	DMRC-I				<b>0</b>
2	DMRC-II				<b>0</b>
<b>27</b>	<b>Trauma Center (AIIMS)</b>				
1	AIIMS		13.26	5.04	<b>18.3</b>
2	Trauma Center			10.08	<b>10.08</b>
3	Netaji Nagar			15.12	<b>15.12</b>
4	Sanjay Camp			10.08	<b>10.08</b>
5	Kidwai Nagar			5.04	<b>5.04</b>
6	SJ Airport			5.04	<b>5.04</b>
	Race Course			5.04	<b>5.04</b>
		<b>0</b>	<b>13.26</b>	<b>55.44</b>	<b>68.7</b>

Sl. No	SUB-STATION	INSTALLED CAPACITY			
		66KV	33kV	11kV	TOTAL
<b>28</b>	<b>MUNDKA</b>				
	Rohini-2			11.39	11.39
	<b>LT BRPL</b>				18.5
		0	0	11.39	29.89
<b>29</b>	<b>DSIDC BAWANA</b>				
	DSIDC NRL-1	20			20
	DSIDC NRL-2			10.88	10.88
		20	0	10.88	30.88
<b>30</b>	<b>RIDGE VALLEY</b>				
	Keventry Diary			10.08	10.08
	Nehru Park			5.04	5.04
	Bapu Dham			10.08	10.08
		0	0	25.2	25.2
<b>31</b>	<b>IP EXTN (PRAGATI)</b>				
	Vidyut Bhawan			10.08	10.08
	Dalhousie Road			5.04	5.04
	School Lane			5.04	5.04
	<b>LT NDMC</b>				12.29
		0	0	20.16	32.45
	<b>TOTAL CAPACITY</b>	1067.9	491.4	2092.7	4139

Utility	HT	LT	Total
BYPL	864	102	966
TPDDL	657	119	776
NDMC	180	24	204
DTL	754	0	754
BRPL	1158	242	1400
RPH	20	0	20
MES	20	0	20
<b>TOTAL</b>	<b>3652</b>	<b>487</b>	<b>4139</b>

**20 DETAILS OF BREAK-DOWNS DURING THE MONTH OF SEPTEMBER 2014**

SL NO	OCCURRENCE OF BREAK-DOWN		DETAILS OF THE BREAKDOWN	TIME OF RESTORATION		REMARKS
	DATE	TIME		DATE	TIME	
1	02-04-14	06:00	INDRAPRASTHA POWER 33kV 10MVAR CAP. BANK-I	Contd.		CAPACITOR BANK -1 IS IN OUTAGE DUE TO DAMAGE TO BUSHING OF REACTORS / NCT/ CELLS BY MISCREANTS ON 02.04.2014
2	02-04-14	06:00	INDRAPRASTHA POWER 33kV 10MVAR CAP. BANK-II	Contd.		CAPACITOR BANK NO. 2 IS IN OUTAGE DUE TO DAMAGE TO BUSHING OF REACTORS / NCT / CELLS BY THE MISCREANTS.
3	26-04-14	06:00	INDRAPRASTHA POWER 33kV 10MVAR CAP. BANK-III	Contd.		CAPACITOR BANK NO. 3 IS IN OUTAGE DUE TO NON AVAILABILITY OF NCT, DATE & TIME GIVEN BY I.P.STN. IS 26.04.2014 AT 06.00HRS.
4	14-06-14	04:18	220kV MAHARANIBAGH-MASJID MOTH CKT-I	Contd.		AT MAHARANI BAGH CKT TRIPPED ON DIST PROT,R PHASE, ZONE-1, DIST 3.2KMS AT MASJID MOTH DIST PROT. ZONE-1 TRIED AT MAHARANI BAGH AT 04.47HRS. BUT AGAIN TRIPPED, CABLE OF THE CKT DECLARED FAULTY (CABLE DAMAGED IN DIGGING OPERATION BY PGCIL CONTRACTOR)
5	01-09-14	12:16	400kV Mundka-Jhatikara Ckt-II	01-09-14	12:32	AT MUNDKA NO TRIPPING AT JHATIKRA DIRECT TRIP RECEIVED.
6	01-09-14	12:42	INDRAPRASTHA POWER 220/33kV 100MVA Tx-II	01-09-14	12:50	33KV I/C-II TRIPPED ON R PHASE, O/C
7	01-09-14	15:36	400kV Mundka-Jhatikara Ckt-II	01-09-14	15:55	AT MUNDKA NO TRIPPING AT JHATIKRA DIRECT TRIP SIGNAL RECEIVED
8	01-09-14	16:20	220kV GAZIPUR - BTPS CKT	01-09-14	16:25	AT GAZIPUR NO TRIPPING (CVT AVAILABLE) AT BTPS CKT. TRIPPED WITHOUT INDICATION
9	01-09-14	16:50	GAZIPUR 220/66kV 100MVA Tx-II	01-09-14	18:40	TR. TRIPPED WITHOUT INDICATION
10	02-09-14	17:55	220KV GAZIPUR - MAHARANIBAGH CKT. -I	02-09-14	18:05	CKT. TRIPPED DURING PROT. TESTING BY PORT. DEPTT. AT GAZIPUR.
11	03-09-14	19:13	VASANT KUNJ 220/66kV 160MVA Tx-I	03-09-14	23:15	TR. TRIPPED ON 30F, PRV TRIP ALONGIWITH 66KV I/C-I INTER TRIPPED
12	04-09-14	03:20	INDRAPRASTHA POWER 33kV MINTO ROAD CKT (BAY-34)	05-09-14	02:15	TRIPPED OFF MANUALLY AS TR.-II TRIPPED WITHOUT INDICATOIN.
13	04-09-14	03:20	INDRAPRASTHA POWER 33kV NIRMAN BHAWAN CKT (BAY-2)	04-09-14	03:58	BAY TRIPPED ALONGWITH 220/33kV 100MVA PR. TR. -II AND ENERGIZED AFTER REPLACEMENT OF CB MECHANISM MOTOR.
14	05-09-14	11:59	220KV SHALIMARBAGH-WAZIRPUR CKT-II	05-09-14	12:21	AT WAZIRPUR CKT. TRIPPED ON DIST PROT, 86 AT SHALIMARBAGH NO TRIPPING
15	05-09-14	16:55	PAPPANKALAN-I 66/11kV, 20MVA Tx-I	05-09-14	18:58	TR. TRIPPED ON OLTC BUCHOLZ
16	06-09-14	12:30	INDRAPRASTHA POWER 220/33kV 100MVA Tx-I	06-09-14	15:40	TR. TRIPPED ON 86 REF ON HV SIDE
17	07-09-14	12:11	220KVBAWANA- ROHINI CKT-I	08-09-14	02:03	AT ROHINI CKT. TRIPPED ON DIST PROT, B&C PHASE, 186 A& B. AT BAWANA CKT. TRIPPED ON DIST PROT, B&C PHASE.
18	07-09-14	12:11	220KV BAWANA-SHALIMARBAGH CKT-I	07-09-14	16:55	AT ROHINI CKT. TRIPPED ON 67AX, 186 AT SHALIMARBAGH ALREADY PUT OFF
19	07-09-14	12:11	220KVBAWANA- ROHINI CKT-II	07-09-14	12:41	AT ROHINI CKT. TRIPPED ON ZONE-1 TRIP, ZONE-II TRIP, AT BAWANA NO TRIPPING
20	07-09-14	12:12	220kV KANJHAWALA-NAJAFGARH CKT-2	07-09-14	12:35	AT NAJAFGARH CKT. TRIPPED ON 186, 186 AT KHANJAWALA NO TRIPPING
21	07-09-14	12:12	220kV KANJHAWALA-NAJAFGARH CKT	07-09-14	12:35	AT NAJAFGARH CKT. TRIPPED ON 186, 186 AT KHANJAWALA NO TRIPPING
22	07-09-14	13:12	220KVBAWANA- ROHINI CKT-II	08-09-14	02:02	AT BAWANA CKT. TRIPPED ON DIST PROT, B PHASE 186 A&B AT ROHINI CKT. TRIPPED ON DIST PROT, B PHASE 186 AT ROHINI -II CKT. TRIPPED ON ZONE-I, ZONE-II
23	07-09-14	16:34	PARKSTREET 220/66kV 100MVA Tx-I	contd.		TR. TRIPPED ON ON BUCHOLZ, 86A, DIFFERENTIAL R&B PHASE. TRANSFORMER DAMAGED.

SL NO	OCCURRENCE OF BREAK-DOWN		DETAILS OF THE BREAKDOWN	TIME OF RESTORATION		REMARKS
	DATE	TIME		DATE	TIME	
24	07-09-14	21:30	PATPARGANJ 220/33kV 100MVA Tx-IV	07-09-14	22:20	33KV I/C-IV TRIPPED ON E/F
25	07-09-14	21:30	PATPARGANJ 220/33kV 100MVA Tx-I	07-09-14	22:20	33KV I/C-I TRIPPED ON E/F
26	08-09-14	15:26	KASHMIRI GATE 33/11kV, 20MVA Tx	08-09-14	15:36	TR. TRIPPED ON 86
27	09-09-14	08:57	220kV WAZIRABAD-GEETA COLONY CKT-I	09-09-14	09:20	AT GEETA COLONY CKT. TRIPPED ON DIST PROT, O/C, ZONE-I,ZONE-3,ACTIVE GROUP -I, DISTANCE 4.31KMS AT WAZIRABAD CKT. TIRPPED ON ZONE-I, DIST PROT, DISTANCE 1KM
28	09-09-14	21:20	INDRAPRASTHA POWER 33kV MINTO ROAD CKT (BAY-34)	11-09-14	17:25	BAY TRIPPED WITHOUT INDICATION, SHUTDOWN FOR CHECKING CONTROL CABLE
29	09-09-14	21:20	INDRAPRASTHA POWER 33kV ELECTRIC LANE CKT (BAY-10)	20-09-14	18:00	CKT. TRIPPED WITHOUT INDICATION. CONTROL CABLE PROBLEM.
30	10-09-14	14:05	220kV PRAGATI - SARITA VIHAR CKT	10-09-14	15:13	AT SARITA VIHAR CB OF CKT. WENT INTO LOCKOUT, AIR PRESSURE LOW, TRIP CKT. LOCKOUT AT PRAGATI CKT. MADE OFF
31	11-09-14	06:23	220kV BAWANA - KANJHAWALA CKT-2	11-09-14	06:30	AT KHANJAWALA NO TRIPPING AT BAWANA CKT. TRIPPED ON DIST PROT, ZONE-I, DISTANCE 9.65KMS
32	11-09-14	06:23	220KV BAWANA -NAJAFGARH CKT	11-09-14	06:33	AT KHANJAWALA SUPPLY FAIL AT NAJAFGARH CKT. TRIPPED ON 186, ABC PHASE
33	11-09-14	18:45	GAZIPUR 220/66kV 100MVA Tx-I	11-09-14	20:45	TR. TRIPPED ON BUCHOLZ RELAY
34	13-09-14	07:44	ROHINI 220/66kV 100MVA Tx-II	13-09-14	07:57	66KV I/C-II TRIPPED ON O/C
35	13-09-14	07:44	ROHINI 220/66kV 100MVA Tx-I	13-09-14	07:57	66KV I/C-I TRIPPED ON O/C
36	14-09-14	06:05	220 KV I.P.- RPH CKT-I	27-09-14	19:15	AT I.P. CKT. TRIPPED ON VT SUPPLY FAIL AT RPH NO TRIPPING. CONTRAL CABLE PROBLEM AT I.P.
37	14-09-14	17:45	220kV BAMNAULI-NARAINA CKT-I	14-09-14	18:22	AT BAMNAULI CKT. TRIPPED ON 67C, 186A, 186B, WITH HEAVY JERK, CKT. WAS ON NO LOAD AT NARAINA NO TRIPPING
38	14-09-14	17:47	400kV Dadri-Harsh Vihar Ckt-I	14-09-14	20:18	AT HARSH VIHAR CKT. TRIPPED ON GENERAL TRIP AT DADRI NO TRIPPING
39	14-09-14	17:47	HARSH VIHAR 220/66KV 160MVA ICT-1	14-09-14	20:47	TR. TRIPPED ON GENERAL TRIP, O/C, E/F
40	15-09-14	09:45	INDRAPRASTHA POWER 220/33kV 100MVA Tx-II	16-09-14	12:25	TR. TRIPPED ON 51B, O/C
41	15-09-14	11:10	INDRAPRASTHA POWER 220/33kV 100MVA Tx-I	15-09-14	11:38	TR. TRIPPED ON E/F, LOAD OF BAY NO. 13, 29, 19 & 17 AFFECTED
42	15-09-14	11:12	WAZIRABAD 220/66kV 100MVA Tx-I	15-09-14	11:22	I/C TRIPPED ON O/C, B PHASE
43	15-09-14	11:12	WAZIRABAD 220/66kV 100MVA Tx-II	15-09-14	11:23	TR. TRIPPED WITHOUT INDICATION
44	15-09-14	11:12	WAZIRABAD 220/66kV 100MVA Tx-III	15-09-14	11:23	TR. TRIPPED WITHOUT INDICATION
45	15-09-14	11:12	220KV WAZIRABAD - MANDOLA CKT-IV	15-09-14	19:40	CKT. TRIPPED WHILE NORMALIZING THE SHUTDOWN ON SOTF. B PHASE LA DAMAGED AT WAZIRABAD.
46	15-09-14	18:28	220kV KANJHAWALA-NAJAFGARH CKT	15-09-14	19:15	AT KHANJAWALA CKT. TRIPPED ON AIR PRESSURE LOW AT NAJAFGARH NO TRIPPING CKT. WAS ON NO LOAD
47	15-09-14	18:30	RIDGE VALLEY 220/66kV 160MVA Tx-I	15-09-14	23:25	DC LEAKAGE RELAY OPERATED
48	15-09-14	19:41	220kV KANJHAWALA-NAJAFGARH CKT-2	15-09-14	19:47	AT KHANJAWALA CKT. TRIPPED ON DIST PROT, AT NAJAFGARH NO TRIPPING

SL NO	OCCURRENCE OF BREAK-DOWN		DETAILS OF THE BREAKDOWN	TIME OF RESTORATION		REMARKS
	DATE	TIME		DATE	TIME	
49	16-09-14	13:04	220kV MAHARANI BAGH - LODHI ROAD CKT-II	16-09-14	13:20	AT MAHARANI BAGH CKT. TRIPPED ON MAIN-2, ZONE-I, UNDER VOLTAGE, AT LODHI ROAD NO TRIPPING
50	16-09-14	13:05	RIDGE VALLEY 220/66kV 160MVA Tx-II	16-09-14	14:50	TR. TRIPPED ON E/F, GEN TRIP, 86A&B,
51	16-09-14	13:20	220kV DIAL- MEHRAULI CKT-II	16-09-14	14:15	AT DIAL CKT TRIPPED ON MAIN-II, B PHASE TRIP, PROT TRIP, ZONE-I AT MEHRAULI CKT. TRIPPED ON ACTIVE GROUP -I, TRIP PHASE ABC, DIST. PROT, DISTANCE 7.562KMS.
52	16-09-14	15:23	HARSH VIHAR 220/66KV 160MVA ICT-1	16-09-14	18:31	TR. TRIPPED WITHOUT INDICATION ALONGWITH I/C TRIPPED ON 86
53	16-09-14	15:23	HARSH VIHAR 400/220kV 315MVA ICT-I	16-09-14	16:27	ICT TRIPPED ON 86 OPERATED AND CB TROUBLE ALARM
54	16-09-14	15:23	HARSH VIHAR 400/220kV 315MVA ICT-II	16-09-14	16:27	ICT TRIPPED ON 86 OPERATED AND CB TROUBLE ALARM
55	16-09-14	15:48	PATPARGANJ 33/11kV, 16MVA Tx	16-09-14	17:24	TR. TRIPPED ON BUCHOLZ
56	17-09-14	07:50	INDRAPRASTHA POWER 220/33kV 100MVA Tx-I	17-09-14	08:10	TR. TRIPPED WITHOUT INDICATION
57	17-09-14	08:23	220 KV PATPARGANJ - I.P. CKT-II	17-09-14	18:02	CKT. MADE OFF DUE TO HUMMING NOISE IN ALL PHASE CTs.
58	17-09-14	12:05	220KV SHALIMARBAGH-WAZIRPUR CKT-I	17-09-14	13:24	AT WAZIRPUR CKT. TRIPPED ON REL, 670, REL 860C AT SHALIMARBAGH NO TRIPPING
59	17-09-14	12:05	220KV SHALIMARBAGH-WAZIRPUR CKT-II	17-09-14	13:34	AT WAZIRPUR CKT. TRIPPED ON REL AT SHALIMARBAGH NO TRIPPING
60	17-09-14	15:33	220kV GAZIPUR - BTPS CKT	Contd.		AT BTPS CKT. TRIPPED ON DIST PROT, ZONE-1, Y PHASE, DISTANCE 10.2KMS AT GAZIPUR SAME INDICATION (CABLE FAULTY)
61	18-09-14	12:23	220KVBAWANA- ROHINI CKT-II	18-09-14	13:39	AT BAWANA CKT TRIPPED ON DIST PROT, A PHASE AT ROHINI-II CKT. TRIPPED ON ZONE-I, ZONE-II, SOTF, R PHASE FAULT AT ROHINI -I SUPPLY FAIL ONLY
62	18-09-14	16:04	220kV PRAGATI - SARITA VIHAR CKT-II	18-09-14	18:49	AT PRAGATI CKT TRIPPED ON ACTIVE GROUP -1, TRIP ABC, ZONE-I, FAULT LOCATION 0.0KM, 186, 186 AT SARITA VIHAR ABC, ZONE-II, DISTANCE 9.793KMS, 186X, DIST PROT, TRIP CKT. FAULTY, AT BTPS HEAVY JERK OBSERVED
63	19-09-14	06:50	220 KV PATPARGANJ - I.P. CKT-I	19-09-14	10:18	AT I.P. CKT. TRIPPED WITHOUT INDICATION AT PATPARGANJ NO TRIPPING
64	20-09-14	16:05	GAZIPUR 220/66kV 100MVA Tx-II	20-09-14	16:15	66KV I/C-II TRIPPED ON E/F, 86
65	21-09-14	04:30	RIDGE VALLEY 220/66kV 160MVA Tx-I	21-09-14	05:20	TR. TRIPPED ON 86
66	21-09-14	04:30	RIDGE VALLEY 220/66kV 160MVA Tx-II	21-09-14	05:37	TR. TRIPPED ON E/F, 86
67	21-09-14	13:33	220kV BAMNAULI-PAPPANKALAN-II CKT-II	21-09-14	18:27	AT BAMNAULI CKT. TRIPPED ON DIST PRO, 186 A&B AT PAPANALAN -II B PHASE LA OF 220KV SIDE BUSTED AND SUPPLY FAILED.
68	21-09-14	14:12	PAPPANKALAN-II 220/66kV 100MVA Tx-II	21-09-14	14:26	TR. TRIPPED ON O/C, 86 AND I/C TRIPPED ON 86
69	21-09-14	15:02	PAPPANKALAN-II 220/66kV 160MVA Tx-I	21-09-14	15:04	TR. TRIPPED ON O/C, E/F, 86 BUT ITS I/C DID NOT TRIP.
70	21-09-14	15:02	PAPPANKALAN-II 220/66kV 100MVA Tx-II	21-09-14	15:04	TR. AND I/C TRIPPED ON 86, O/C, E/F
71	22-09-14	07:24	INDRAPRASTHA POWER 220/33kV 100MVA Tx-I	22-09-14	15:10	TR. TRIPPED WITHOUT INDICATION DUE TO CONTROL CABLE THEFT.
72	22-09-14	07:24	INDRAPRASTHA POWER 220/33kV 100MVA Tx-II	22-09-14	11:35	TR. TRIPPED WITHOUT INDICATION DUE TO CONTROL CABLE THEFT.
73	22-09-14	07:24	220 KV PATPARGANJ - I.P. CKT-I	23-09-14	18:07	AT CKT. TRIPPED AS ROBBERY OF CONTROL CABLE CARRIED OUT BY AS UNKNOWN PERSONS.



SL NO	OCCURRENCE OF BREAK-DOWN		DETAILS OF THE BREAKDOWN	TIME OF RESTORATION		REMARKS
	DATE	TIME		DATE	TIME	
74	23-09-14	05:39	220kV BAWANA - KANJHAWALA CKT-2	23-09-14	05:57	AT BAWANA CKT. TRIPPED ON DISTANCE PROT, ZONE-I, B PHASE, DISTANCE 5.78KMS. AT KHANJAWALA CKT. TRIPPED ON DISTANCE PROT, Y PHASE, AT NAJAFGARH SUPPLY FAILED.
75	23-09-14	15:00	GAZIPUR 220/66kV 100MVA Tx-I	23-09-14	15:20	TR. TRIPPED WITHOUT INDICATION
76	24-09-14	06:45	INDRAPRASTHA POWER 220/33kV 100MVA Tx-II	24-09-14	06:58	TR. TRIPPED WITHOUT INDICATION
77	24-09-14	09:08	INDRAPRASTHA POWER 220/33kV 100MVA Tx-I	24-09-14	12:20	TR. TRIPPED ON REF
78	24-09-14	12:10	220kV MEHRAULI - BTPS CKT. - II	24-09-14	12:36	AT SARTA VIHAR CKT. TRIPPED ON 186 A, B, ZONE-I, DISTANCE 12.53KMS. AT BTPS CKT. TRIPPED ON ZONE-I, DISTANCE 4.2KMS, R PHASE , Y PHASE, DIST PROT.
79	25-09-14	07:15	INDRAPRASTHA POWER 33kV ELECTRIC LANE CKT (BAY-10)	25-09-14	14:10	BAY NO 10 TRIPPED WITHOUT INDICATION DUE TO CONTROL CABLE PROBLEM.
80	25-09-14	12:48	220kV GOPALPUR-SUBZI MANDI CKT-II	25-09-14	17:24	AT GOPALPUR CKT. TRIPPED ON POLE DISCREPANCY AT SUBZI MANDI NO TRIPPING
81	25-09-14	20:35	INDRAPRASTHA POWER 220/33kV 100MVA Tx-II	25-09-14	20:48	TR. TRIPPED WITHOUT INDICATION
82	25-09-14	20:35	INDRAPRASTHA POWER 220/33kV 100MVA Tx-I	25-09-14	21:15	TR. TRIPPED ON 86 REF FROM HV SIDE AND I/C ALSO TRIPPED WITHOUT INDICATION
83	26-09-14	13:55	INDRAPRASTHA POWER 220/33kV 100MVA Tx-II	27-09-14	11:10	33KV I/C-II TRIPPED WITHOUT INDICATION
84	26-09-14	14:05	INDRAPRASTHA POWER 220/33kV 100MVA Tx-I	28-09-14	15:05	TR. TRIPPED ON O/C RELAY DUE TO CONTROL CABLE PROBLEM.
85	27-09-14	09:18	MUNDKA 220/66kV 160MVA Tx-II	27-09-14	15:24	TR. TRIPPED ON DIFFERENTIAL B PHASE.
86	28-09-14	13:40	220kV GEETA COLONY- PATPARGANJ CKT -II	28-09-14	15:50	AT GEETA COLONY CKT. TRIPPED ON DIST PROT, ZONE-I, DIST. 2.439KM, ABC PHASE AT GEETA COLONY CKT. TRIPPED ON ZONE-I, DIST PROT, DISTANCE 2.290KMS.
87	28-09-14	14:20	OKHLA 220/33kV 100MVA Tx-IV	28-09-14	14:57	FLASH REPORTED ON R PHASE LINE ISOLATOR OF 33KV I/C-IV, 100MVA -IV MADE OFF
88	28-09-14	19:32	INDRAPRASTHA POWER 220/33kV 100MVA Tx-I	28-09-14	22:22	TR. TRIPPED ON REF HV SIDE 33KV I/C-I TRIPPED ALONG WITH BAY NO. 13 (NIZAMUDDIN) ON E/F & BAY NO. 19 (G.B.PANT) ON E/F
89	29-09-14	12:57	NARAINA 220/33kV 100MVA Tx-II	29-09-14	18:14	I/C-II TRIPPED ON O/C B PHASE
90	29-09-14	12:57	220kV NARAINA-RIDGE VALLEY CKT-I	29-09-14	18:14	AT NARAINA CKT. TRIPPED ON O/C R PHASE AT RIDGE VALLY NO TRIPPING
91	29-09-14	14:26	OKHLA 33kV TUGLAKABAD CKT	29-09-14	16:03	CKT. PUT OFF AS SPARKING OBSERVED IN BREAKER
92	30-09-14	15:07	220kV BAMNAULI-PAPPANKALAN-I CKT-I	30-09-14	15:28	AT BAMNAULI CKT. TRIPPED ON DIST PROT. ZONE-II, C PHASE, 186A&B AT PAPANALAN-I NO TRIPPING

**20      DETAILS OF UNDER FREQUENCY RELAY OPERATIONS IN DELHI POWER SYSTEM DURING THE MONTH OF SEPTEMBER 2014**

DATE	S. N.	TIME		Name of Grid	NAME OF AFFECTED FEEDERS	MODE	LOAD RELIEF IN MW
		OUT	IN				
				NIL			